

## 702/8 Marmion Place Docklands VIC

2 1 1

Desirably located in the Harbour One Tower, which captures all the vibrancy of a New Quay lifestyle, this magnificent apartment is a testament to spectacular low-maintenance living. Light-filled and offering beautiful views, welcoming interiors reveal open-plan living/dining unfolding to a private balcony, well-equipped modern kitchen, 2 robed bedrooms (main with balcony) and stylish bathroom. Finished with heating/AC and car space, along with building facilities including gymnasium, exclusive library/lounge and audio-visual room. Positioned to perfection, this entry-level or investor retreat is close to The District Docklands which features Hoyts Cinemas, Woolworths supermarket, Dan Murphy's, Chemist Warehouse, and a wide range of specialty shops & restaurants. You're also close to Capital City Trail, Docklands Primary School, and kindergarten, Marvel

**Price** : \$ 510,000

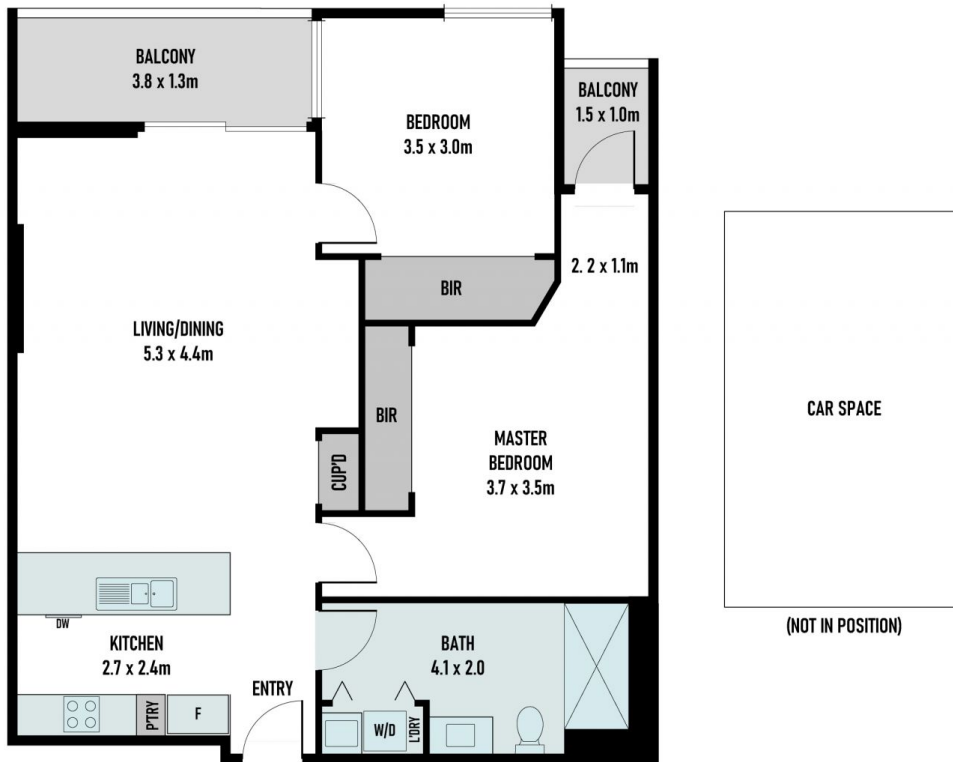
**View** : <https://www.areal.com.au/sale/vic/inner-city/docklands/residential/apartment/7974492>



**Dave Tang**  
03 8686 8388



**Andy Yuan**  
03 8686 8388



**A/REAL**

Scale in metres. Indicative only. All information contained herein is obtained from sources we believe to be accurate. We cannot guarantee its accuracy. You should make and rely on your own enquiries.

