

## 103/16 Lomandra Drive Clayton South VIC

2 2 1

Displaying the perfect combination of comfort, style and low-maintenance living, this chic apartment presents a superb opportunity for market entrants or savvy investors seeking a strong rental return.

Enjoy an effortless lifestyle along with luxurious finishes throughout the sunlit open-plan living/dining zone (split system heating/AC), complemented by a striking kitchen equipped with stone surfaces and quality stainless steel appliances, plus a private entertaining balcony.

The main bedroom is fitted with a luxe ensuite/WIR, while a second robed bedroom and stunning bathroom complete interior dimensions.

Privileged by a prime position, walking distance to Clayton

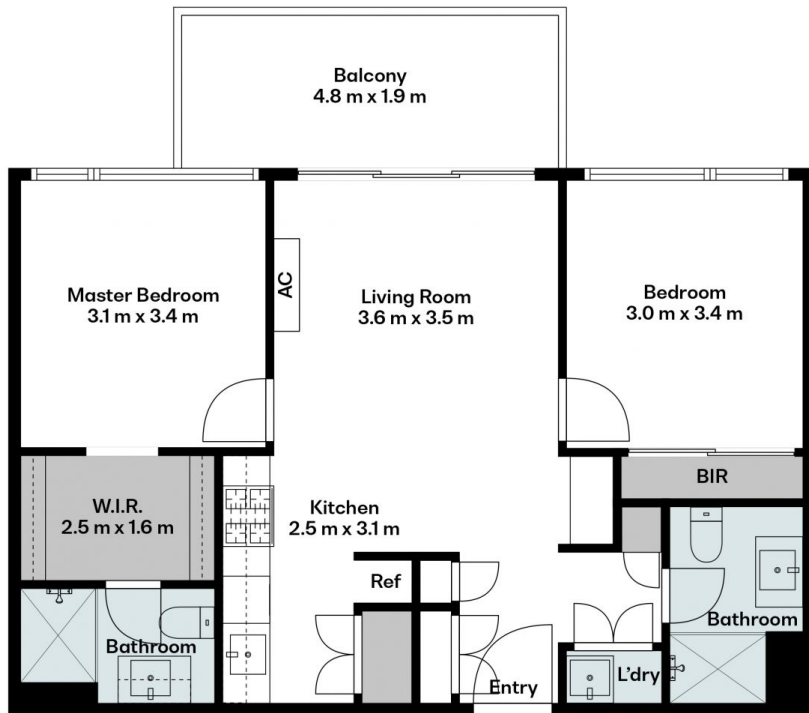
**Price** : \$ 460,000  
**Building Size** : 70.2 sqm  
**View** : <https://www.areal.com.au/sale/vic/south-east/clayton-south/residential/apartment/7949503>



**Dave Tang**  
03 8686 8388



**Andy Yuan**  
03 8686 8388



Scale in metres. Indicative only. All information contained herein is obtained from sources we believe to be accurate. We cannot guarantee its accuracy. You should make and rely on your own enquiries.

