



11 Wicklow Street Ormond VIC

5 2 4

Filled with warmth and timeless charm, this flawless dual-level residence is bound to capture the attention of all discerning families on a vast allotment of 780sqm (approx).

Beautifully presented with modern updates, welcoming multi-zoned interiors are adorned with timber floors and saturating natural light.

The formal lounge and dining domain is oriented to capture northern sun, before flowing through to a casual family/meals area, served by a sleek stone-topped kitchen featuring quality appliances, island bench and ample storage.

A separate living room highlights lifestyle flexibility, while a

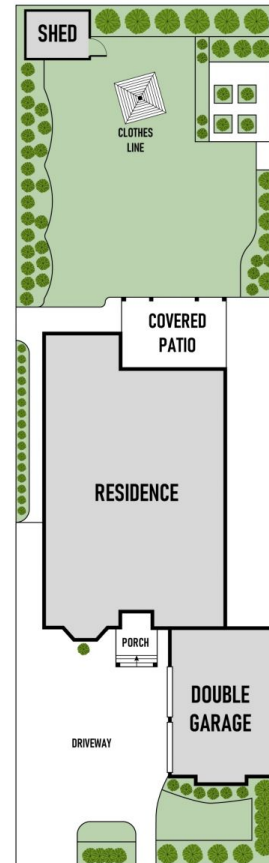
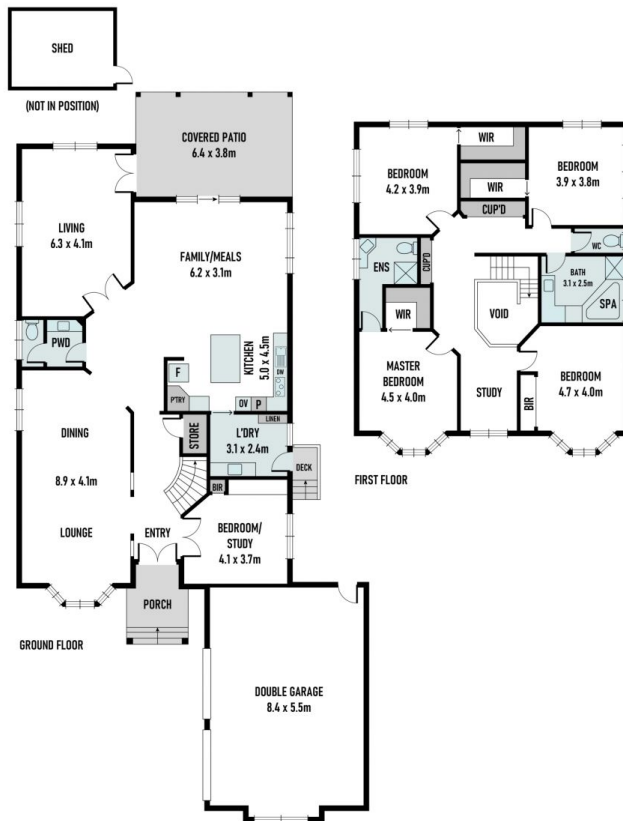
Price : \$ 2,475,000
Land Size : 780 sqm
View : <https://www.areal.com.au/sale/vic/east/ormond/residential/house/7934851>



Gerry Setiyadi
03 9818 8991



Jimmy Lim
03 8686 8388



A/REAL

Scale in metres. Indicative only. All information contained herein is obtained from sources we believe to be accurate. We cannot guarantee its accuracy. You should make and rely on your own enquiries.

