

43M/9 Waterside Place Docklands VIC

2 2 2

Capturing the most breathtaking uninterrupted north-westerly views over Victoria Harbour, this super-sized apartment gives a new meaning to the term 'WOW Factor'.

Positioned in the state-of-the-art Concavo complex, this eye-catching residence is finished with an endless list of superlatives, presenting a remarkably rare lifestyle experience as well as access to amazing building facilities.

Full-height windows frame the open-plan environment to maximise natural light throughout, and complement the premium kitchen flaunting stone surfaces, high-end appliances and island bench.

The luxurious main bedroom is appointed with his/hers

Price : \$1,200,000-\$1,320,000

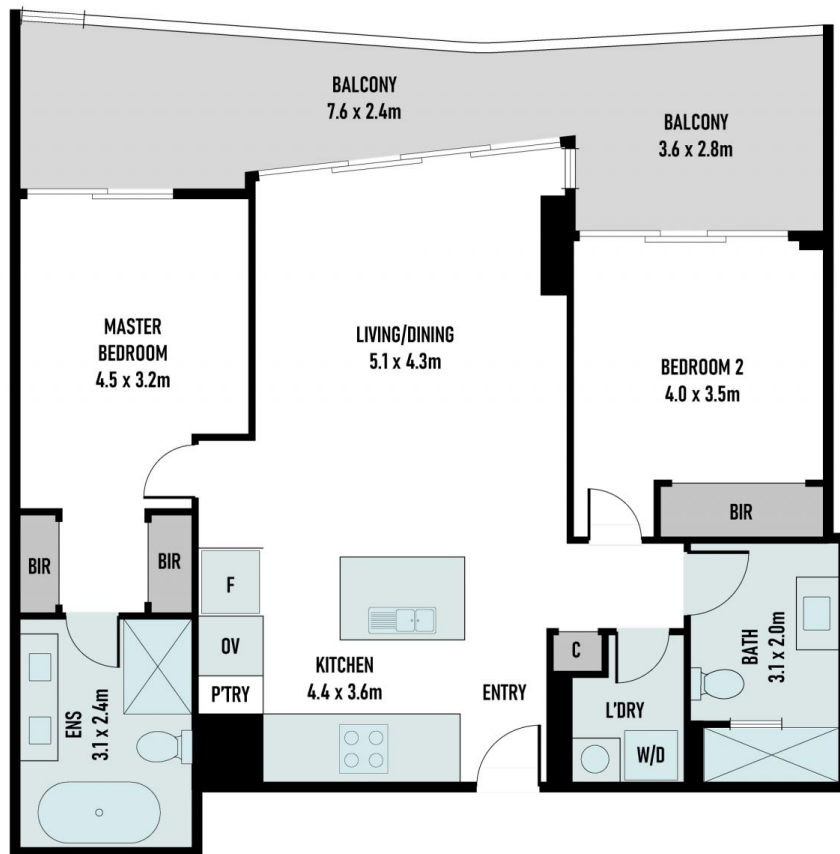
View : <https://www.areal.com.au/sale/vic/inner-city/docklands/residential/apartment/7933991>



Jimmy Lim
03 8686 8388



Dave Tang
03 8686 8388



A/REAL

Scale in metres. Indicative only. All information contained herein is obtained from sources we believe to be accurate. We cannot guarantee its accuracy. You should make and rely on your own enquiries.

