

Stylish Apartment Living With An Effortless Lifestyle Vibe



For Sale

203/16 Lomandra Drive, Clayton South VIC 3169

 2  2

\$465,000

For Sale

203/16 Lomandra Drive, Clayton South VIC 3169



Stylish Apartment Living With An Effortless Lifestyle Vibe

Displaying the perfect combination of comfort, style and low-maintenance living, this chic apartment presents a superb opportunity for market entrants or savvy investors seeking a strong rental return.

Enjoy an effortless lifestyle along with luxurious finishes throughout the sunlit open-plan living/dining zone (split system heating/AC), complemented by a striking kitchen equipped with stone surfaces and quality stainless steel appliances, plus a private entertaining balcony.

The main bedroom is fitted with a luxe ensuite/WIR, while a second robed bedroom and stunning bathroom complete interior dimensions.

Privileged by a prime position, walking distance to Clayton shops and train station, bus stop, Monash Medical Centre, cafes and close to Monash University, Keeley Park, Namatjira Park, Westall Secondary College, St Peter's School, Meade Reserve, Clayton South Primary, multiple bus routes and the Monash Freeway.

Disclaimer: We have in preparing the content used our best endeavou...



Dave Tang

Sales Executive

0432 523 853

03 8686 8388

dave.tang@areal.com.au



Andy Yuan

Senior Sales Executive, Licensed Estate Agent, Auctioneer

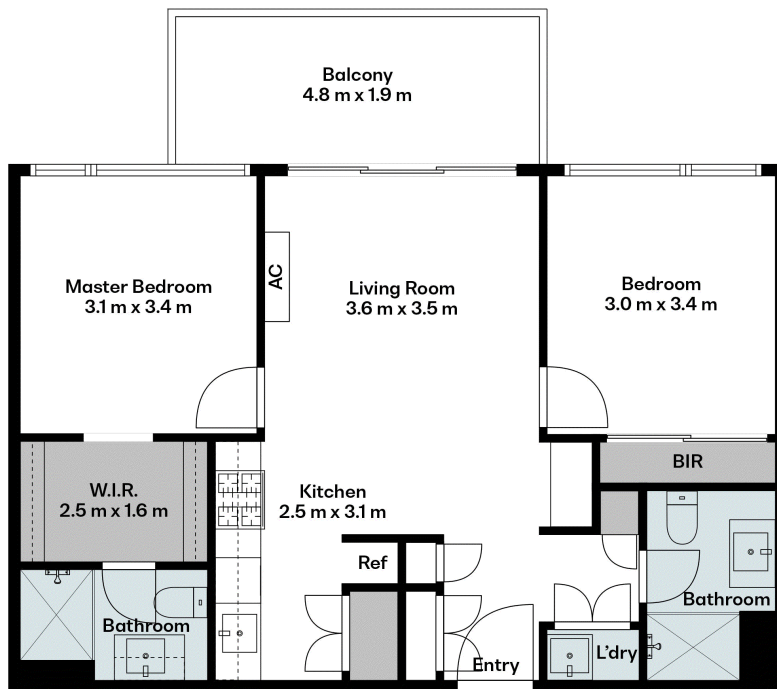
0406 217 388

03 8686 8388

andy.yuan@areal.com.au







BOX HILL

Suite 3.4, Level 3, 990 Whitehorse Road, Box Hill. Victoria 3128 | 8686 8388

HAWTHORN EAST

33 Camberwell Road, Hawthorn. Victoria 3123 | 9818 8991

MELBOURNE CBD

Level 7, 99 Queen Street, Melbourne. VIC 3000 | 9818 8991

NORTH

Suites 4 & 5 High Street, Lalor. VIC 3075 | 03 9436 0888

POINT COOK

Entrance C4, Level 1, 2 Main Street, Point Cook. VIC 3030 | 8686 8338

SOUTH MORANG

29 Gorge Road, South Morang. VIC 3752 | 8804 5888

info@areal.com.au

areal.com.au