

Ultimate blend of luxury,  
location & convenience



For Sale

2205/45 Clarke Street, Southbank VIC 3006

 2  2

\$540,000

## For Sale

2205/45 Clarke Street, Southbank VIC 3006



### Ultimate blend of luxury, location & convenience

The exclusive Platinum Zeta complex is a prestigious example of inner-city living. Luxurious in appointment and offering stunning views to the east from its covered balcony, this sublime 2 bedroom, 2 bathroom apartment reveals; open-plan living/dining, crisp white kitchen showcasing stone surfaces and quality stainless steel appliances and split system heating/AC.

Elevating your lifestyle, the Platinum building offers exclusive top-floor amenities. Immerse yourself in luxury with a refreshing pool, indulgent spa and a rejuvenating steam room, state-of-the-art gym and reservable sky lounges that offer breathtaking panoramic views.

Enhancing the allure of this stunning retreat is the presence of a ground-level Woolworths, providing unparalleled convenience for your daily requirements. With shopping merely an elevator ride away, you can relish the opulence of urban living without sacrificing practicality, as you're within walking distance of the Crown Entertainment precinct, Southgate,...



**Kay Lim**

Sales Executive, Licensed Estate Agent

0416 260 421

03 8686 8388

[kay.lim@areal.com.au](mailto:kay.lim@areal.com.au)



**Dave Tang**

Sales Executive

0432 523 853

03 8686 8388

[dave.tang@areal.com.au](mailto:dave.tang@areal.com.au)

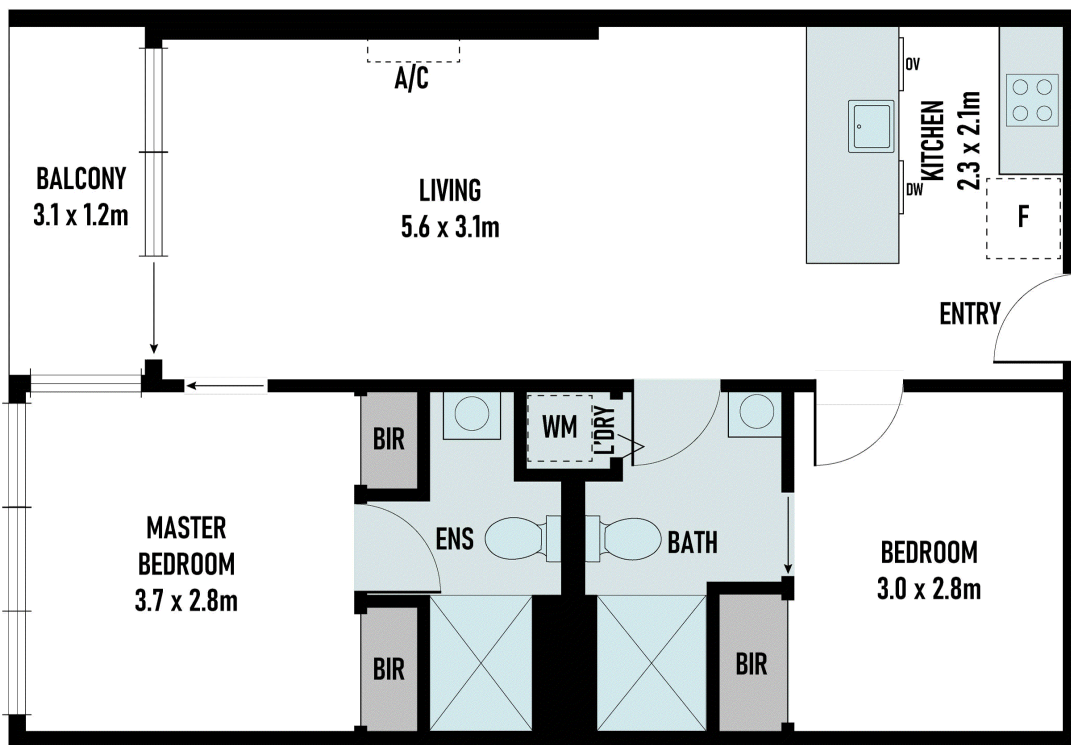


A/REAL



A/REAL





## BOX HILL

Suite 3.4, Level 3, 990 Whitehorse Road, Box Hill. Victoria 3128 | 8686 8388

## HAWTHORN EAST

33 Camberwell Road, Hawthorn. Victoria 3123 | 9818 8991

## MELBOURNE CBD

Level 7, 99 Queen Street, Melbourne. VIC 3000 | 9818 8991

## NORTH

Suites 4 & 5 High Street, Lalor. VIC 3075 | 03 9436 0888

## POINT COOK

Entrance C4, Level 1, 2 Main Street, Point Cook. VIC 3030 | 8686 8338

## SOUTH MORANG

29 Gorge Road, South Morang. VIC 3752 | 8804 5888

[info@areal.com.au](mailto:info@areal.com.au)