

## Contemporary Family Living With Beautiful Parkland Frontage



## For Sale

11 Riparian Way, Brookfield VIC 3338



4



2



501sqm

\$505,000

## For Sale

11 Riparian Way, Brookfield VIC 3338



4



2

501sqm

### Contemporary Family Living With Beautiful Parkland Frontage

A stunning representation of contemporary excellence, this single-level family home provides impressive dual-zoned space, quality appointments and a beautiful parkland frontage in the exclusive Riverina Estate.

Platinum presentation defines spacious interiors, with an inviting living room preceding a vast open-plan family/meals area, including a well-equipped gourmet kitchen.

The privately zoned master suite is fitted with an ensuite/WIR, and accompanied by 3 additional robed bedrooms.

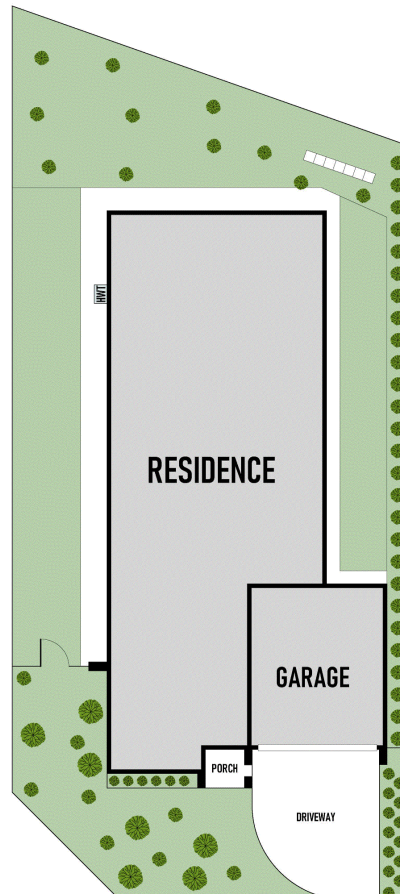
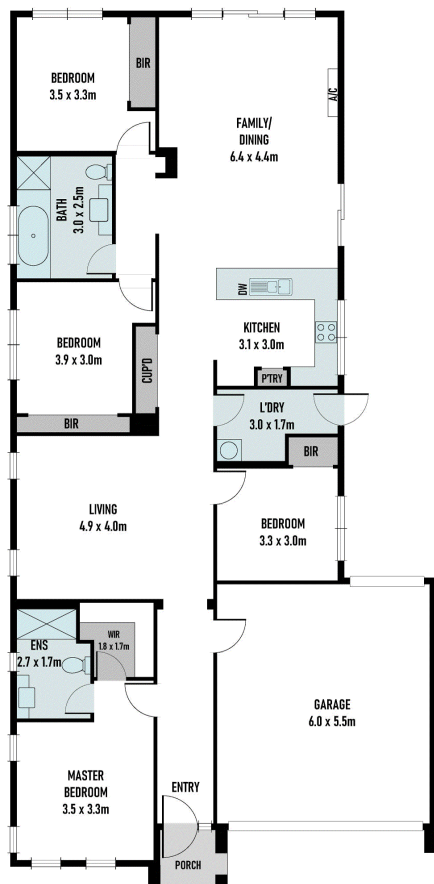
Affording a superior lifestyle with every indulgence for comfortable family living, with ducted heating, split system AC, good-sized rear garden and double garage with internal access.

Live a serene parkland lifestyle with waterways and walking/bike tracks practically at your door step, and close to a playground, freeway access, public transport and Woodgrove Shopping Centre.

Disclaimer: We have in preparing the content used our best endeavours to ensure that the information contained is true and...







## BOX HILL

Suite 3.4, Level 3, 990 Whitehorse Road, Box Hill. Victoria 3128 | 8686 8388

## HAWTHORN EAST

33 Camberwell Road, Hawthorn. Victoria 3123 | 9818 8991

## MELBOURNE CBD

Level 7, 99 Queen Street, Melbourne. VIC 3000 | 9818 8991

## NORTH

Suites 4 & 5 High Street, Lalor. VIC 3075 | 03 9436 0888

## POINT COOK

Entrance C4, Level 1, 2 Main Street, Point Cook. VIC 3030 | 8686 8338

## SOUTH MORANG

29 Gorge Road, South Morang. VIC 3752 | 8804 5888

[info@areal.com.au](mailto:info@areal.com.au)