

Luxurious Family Living On A Grand-scale



For Sale

310 Saltwater Promenade, Point Cook VIC 3030

 4  2  512sqm

Price Withheld

For Sale

310 Saltwater Promenade, Point Cook VIC 3030

 4  2  512sqm

Luxurious Family Living On A Grand-scale

Embrace a lifestyle of contemporary luxury in this state-of-the-art 4 bedroom, 2 bathroom masterpiece, defined by impressive proportions, quality finishes and a coveted lifestyle location. Multiple living zones highlight exceptional family flexibility, complemented by saturating natural light throughout.

A soaring entry void and north-facing living room introduce remarkable dimensions, and lead to a vast open-plan family/dining domain, including a gourmet kitchen showcasing stone surfaces, stainless steel appliances and island bench.

An exemplary sense of space is further highlighted by a theatre room, upper-level retreat/family room and palatial master suite featuring a lavish twin ensuite, WIR and sunny northerly balcony.

Finished to uncompromised standards with powder room, heating/AC, entertaining alfresco and double garage with internal access.

Enjoy estate-style living surrounded by tennis courts, football fields, large parks and playgrounds, including Saltwater Coast Crocod...



Andy Yuan

Senior Sales Executive, Licensed Estate Agent, Auctioneer

0406 217 388

03 8686 8388

andy.yuan@areal.com.au



Dave Tang

Sales Executive

0432 523 853

03 8686 8388

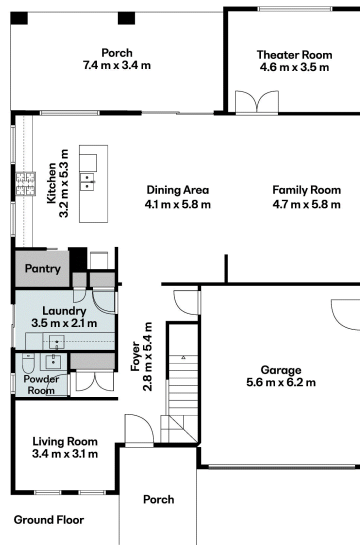
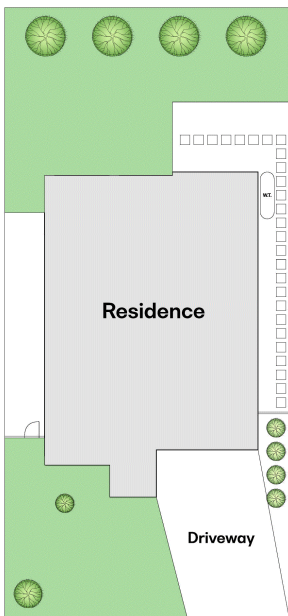
dave.tang@areal.com.au

A/REAL

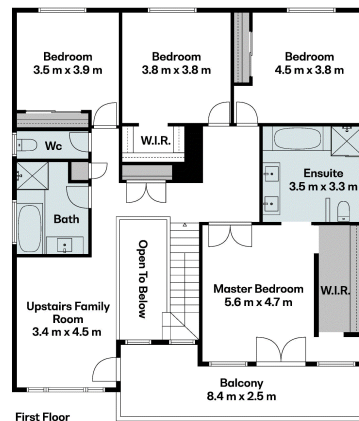


A/REAL





Land Size: 512m²
Living Area: 268m²



BOX HILL

Suite 3.4, Level 3, 990 Whitehorse Road, Box Hill. Victoria 3128 | 8686 8388

HAWTHORN EAST

33 Camberwell Road, Hawthorn. Victoria 3123 | 9818 8991

MELBOURNE CBD

Level 7, 99 Queen Street, Melbourne. VIC 3000 | 9818 8991

NORTH

Suites 4 & 5 High Street, Lalor. VIC 3075 | 03 9436 0888

POINT COOK

Entrance C4, Level 1, 2 Main Street, Point Cook. VIC 3030 | 8686 8338

SOUTH MORANG

29 Gorge Road, South Morang. VIC 3752 | 8804 5888

info@areal.com.au

areal.com.au