

High-end Luxury With Spectacular Views



For Sale

601/81 South Wharf Drive, Docklands VIC 3008

 2  1

\$615,100

For Sale

601/81 South Wharf Drive, Docklands VIC 3008

 2  1

High-end Luxury With Spectacular Views

Located in one of the Docklands' most highly-regarded buildings in the exclusive Wharf's Entrance precinct, this captivating 2 bedroom, 1 bathroom plus study 'Forge' apartment has been architecturally designed with a focus on luxury, space and spectacular views.

The open-plan design is highlighted by full-height glazing, complementing the sublime kitchen flaunting high-end Smeg appliances and illustrious stone surfaces.

Enjoy relaxing or entertaining on your private north-facing balcony, where you can sit and take in the beautiful surrounding views.

Residents of Forge will have exclusive access to an onsite private kitchen/dining room and cinema, and in addition the Wharfs Club with gym, pool and steam room.

Positioned not far from South Wharf Promenade with a range of bars and restaurants, DFO shopping, Crown Casino, Port Melbourne and South Melbourne attractions, public transport, and Westgate Freeway.

Disclaimer: We have in preparing the content used our best endeavours to ens...



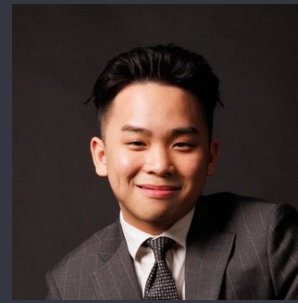
Jimmy Lim

Founder, Managing Director, Licensed Estate Agent

0415 089 332

03 8686 8388

jimmy.lim@areal.com.au



Aaron Tan

Sales Executive

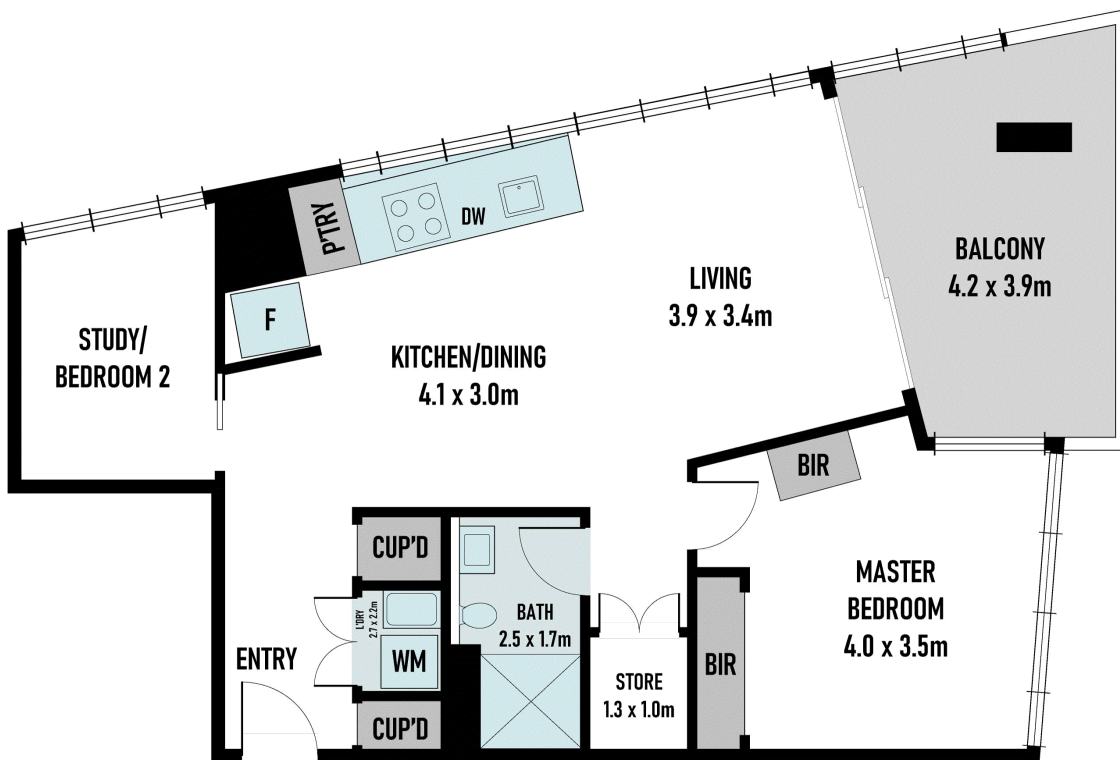
0421 247 332

03 8686 8388

aaron.tan@areal.com.au









BOX HILL

Suite 3.4, Level 3, 990 Whitehorse Road, Box Hill. Victoria 3128 | 8686 8388

HAWTHORN EAST

33 Camberwell Road, Hawthorn. Victoria 3123 | 9818 8991

MELBOURNE CBD

Level 7, 99 Queen Street, Melbourne. VIC 3000 | 9818 8991

NORTH

Suites 4 & 5 High Street, Lalor. VIC 3075 | 03 9436 0888

POINT COOK

Entrance C4, Level 1, 2 Main Street, Point Cook. VIC 3030 | 8686 8338

SOUTH MORANG

29 Gorge Road, South Morang. VIC 3752 | 8804 5888

info@areal.com.au

areal.com.au