

A/REAL

Space for Everyone with
Family-Friendly Design



For Sale

12 Postema Drive, Point Cook VIC 3030

 4  2  377sqm

\$780,000

For Sale

12 Postema Drive, Point Cook VIC 3030

 4  2  377sqm

Space for Everyone with Family-Friendly Design

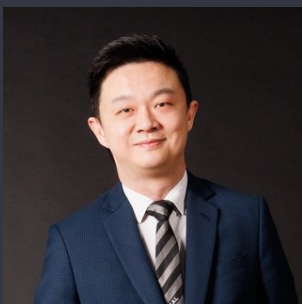
"Your perfect family home awaits!"

Welcome to 12 Postema Drive, Point Cook - your spacious, move-in-ready dream home! With four bedrooms, two bathrooms, and extra living areas, it's perfect for your growing family.

The main level offers a clever layout, featuring a separate study set at the front of the home and a separate rumpus room off the main living area. Stay comfortable year-round with ducted heating and air-conditioning throughout the two levels and enjoy the well-equipped kitchen overlooking the light-filled meals and family area.

The home chef will appreciate the quality stainless steel appliances, gas cooking, the breakfast bar, and a walk-in pantry. Entertaining will be a breeze as you can simply step outside to the covered alfresco area overlooking the backyard, providing a serene outdoor oasis.

Upstairs, you'll find a cozy retreat, perfect for relaxation and leisure with a balcony that offers picturesque views. The peaceful master bedroom boasts a walk-in robe and ...



Jimmy Lim

Founder, Managing Director, Licensed Estate Agent

0415 089 332

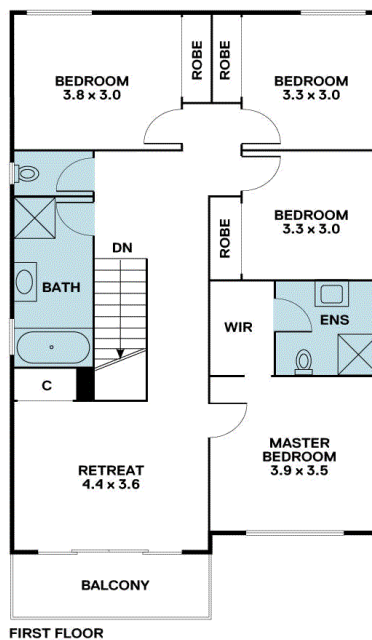
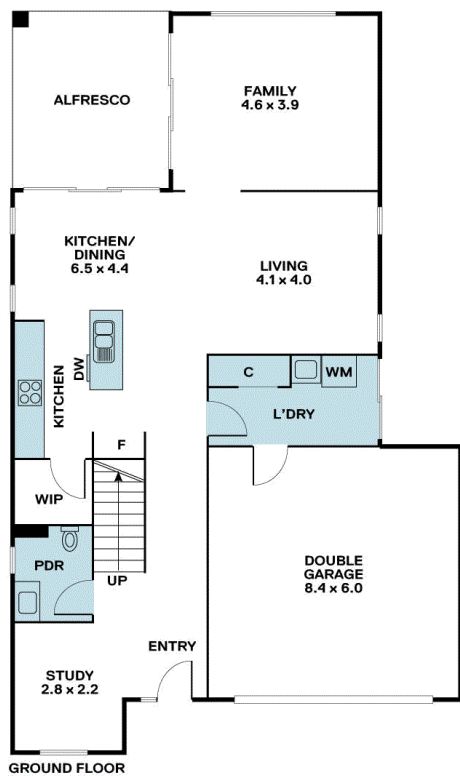
03 8686 8388

jimmy.lim@areal.com.au

A/REAL







INTERNAL : 242m²
 EXTERNAL : 22m²
 TOTAL AREA : 262m²



BOX HILL

Suite 3.4, Level 3, 990 Whitehorse Road, Box Hill. Victoria 3128 | 8686 8388

HAWTHORN EAST

33 Camberwell Road, Hawthorn. Victoria 3123 | 9818 8991

MELBOURNE CBD

Level 7, 99 Queen Street, Melbourne. VIC 3000 | 9818 8991

NORTH

Suites 4 & 5 High Street, Lalor. VIC 3075 | 03 9436 0888

POINT COOK

Entrance C4, Level 1, 2 Main Street, Point Cook. VIC 3030 | 8686 8338

SOUTH MORANG

29 Gorge Road, South Morang. VIC 3752 | 8804 5888

info@areal.com.au