

## Sky-High Luxury in Melbourne's Premier West Side Place



### For Lease

2202/648 Lonsdale Street, Melbourne VIC 3000

 2  2

\$850 per Week

## For Lease

2202/648 Lonsdale Street, Melbourne VIC 3000



### Sky-High Luxury in Melbourne's Premier West Side Place

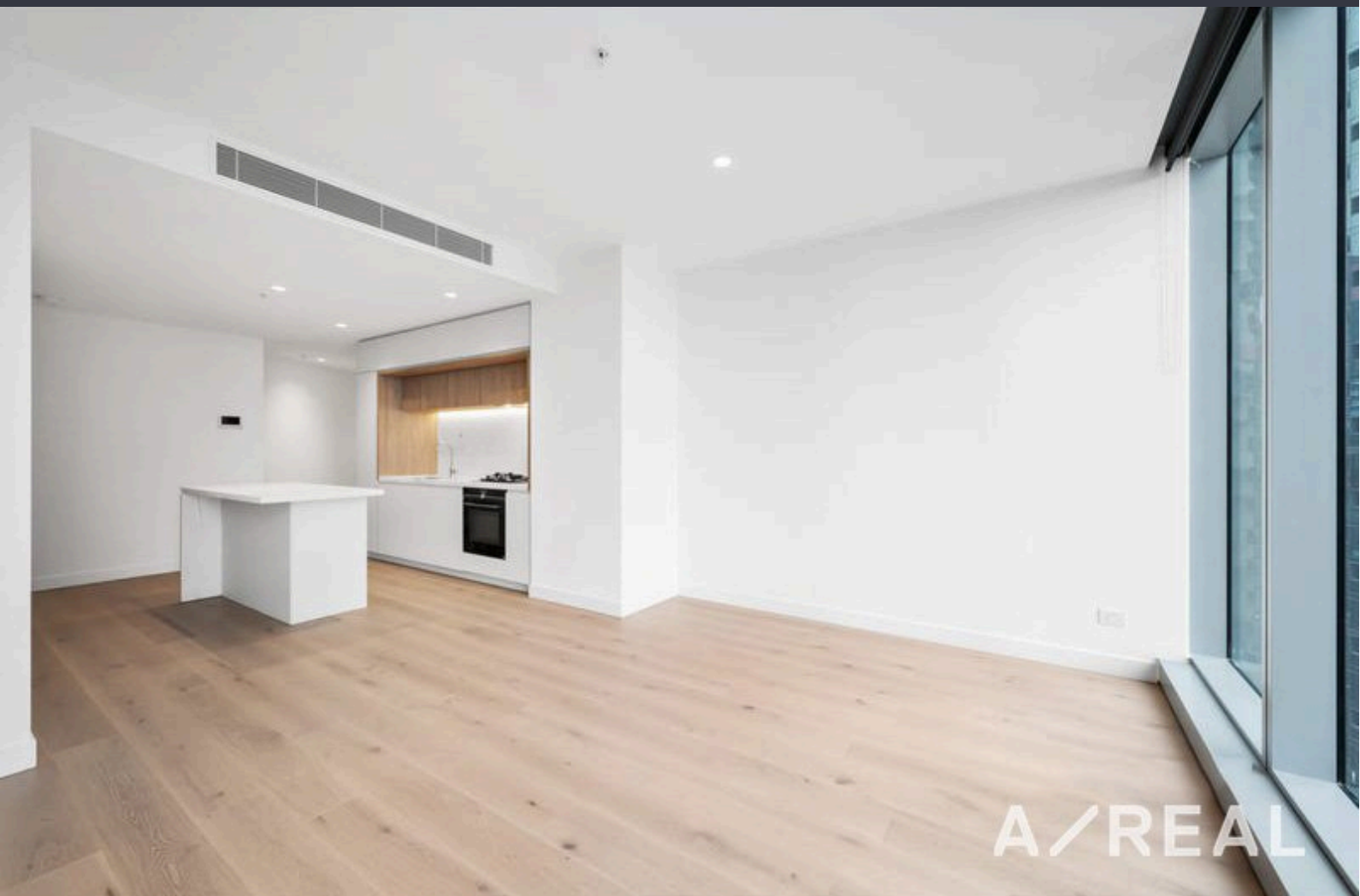
\*\*Scheduling your property inspection is now a breeze! Simply click on the "Book an Inspection" or "Request a Time" button to secure your appointment. You'll instantly receive a confirmation and be kept up-to-date with any alterations or cancellations concerning your scheduled visit. Please be aware, inspections may be subject to cancellation if no bookings are registered. Make your booking today and take the first step in finding your ideal home\*\*

West Side Place is one of the prestigious residential buildings in Melbourne CBD. Defined by its outstanding onsite facilities, sky gardens, pools, gyms, lounges, private dining areas, meeting rooms, cinema, karaoke & even virtual golf. Unwind, work out, entertain or do business in surroundings that speak volumes about your sense of style.

Positioned high above the western end of Melbourne's CBD, you'll feel like you're floating on a cloud of modern bliss as you enjoy all that this apartment has to offer. Superior timber floors make an el...

A/REAL





## BOX HILL

Suite 3.4, Level 3, 990 Whitehorse Road, Box Hill. Victoria 3128 | 8686 8388

## HAWTHORN EAST

33 Camberwell Road, Hawthorn. Victoria 3123 | 9818 8991

## MELBOURNE CBD

Level 7, 99 Queen Street, Melbourne. VIC 3000 | 9818 8991

## NORTH

Suites 4 & 5 High Street, Lalor. VIC 3075 | 03 9436 0888

## POINT COOK

Entrance C4, Level 1, 2 Main Street, Point Cook. VIC 3030 | 8686 8338

## SOUTH MORANG

29 Gorge Road, South Morang. VIC 3752 | 8804 5888

[info@areal.com.au](mailto:info@areal.com.au)