

## Brand New! Contemporary Comfort in a Prime Family Setting!



## For Lease

1 Nishi Walk, Deanside VIC 3336

 4  2

\$480 per Week

## For Lease

1 Nishi Walk, Deanside VIC 3336

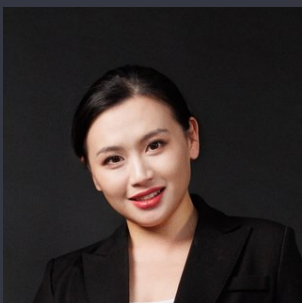
 4  2

### Brand New! Contemporary Comfort in a Prime Family Setting!

\*\*Scheduling your property inspection is now a breeze! Simply click on the "Book an Inspection" or "Request a Time" button to secure your appointment. You'll instantly receive a confirmation and be kept up-to-date with any alterations or cancellations concerning your scheduled visit. Please be aware, inspections may be subject to cancellation if no bookings are registered. Make your booking today and take the first step in finding your ideal home\*\*

Step into a lifestyle of modern comfort and effortless convenience with this beautifully designed townhouse, perfectly positioned in a vibrant and family-friendly neighbourhood. From its stylish interiors to its thoughtfully planned spaces, this home is ideal for families and professionals seeking quality, space, and functionality.

The home welcomes you with a versatile home office at the entry — perfect for remote work, study, or a quiet retreat. Flowing through to the heart of the home, the open-plan living and dining area is bathed in ...



### Renata Xiang

Business Development Manager

0437 626 898

03 9116 5797

renata.xiang@areal.com.au

A/REAL



A/REAL



A/REAL

A/REAL



A/REAL



A/REAL

## BOX HILL

Suite 3.4, Level 3, 990 Whitehorse Road, Box Hill. Victoria 3128 | 8686 8388

## HAWTHORN EAST

33 Camberwell Road, Hawthorn. Victoria 3123 | 9818 8991

## MELBOURNE CBD

Level 7, 99 Queen Street, Melbourne. VIC 3000 | 9818 8991

## NORTH

Suites 4 & 5 High Street, Lalor. VIC 3075 | 03 9436 0888

## POINT COOK

Entrance C4, Level 1, 2 Main Street, Point Cook. VIC 3030 | 8686 8338

## SOUTH MORANG

29 Gorge Road, South Morang. VIC 3752 | 8804 5888

[info@areal.com.au](mailto:info@areal.com.au)