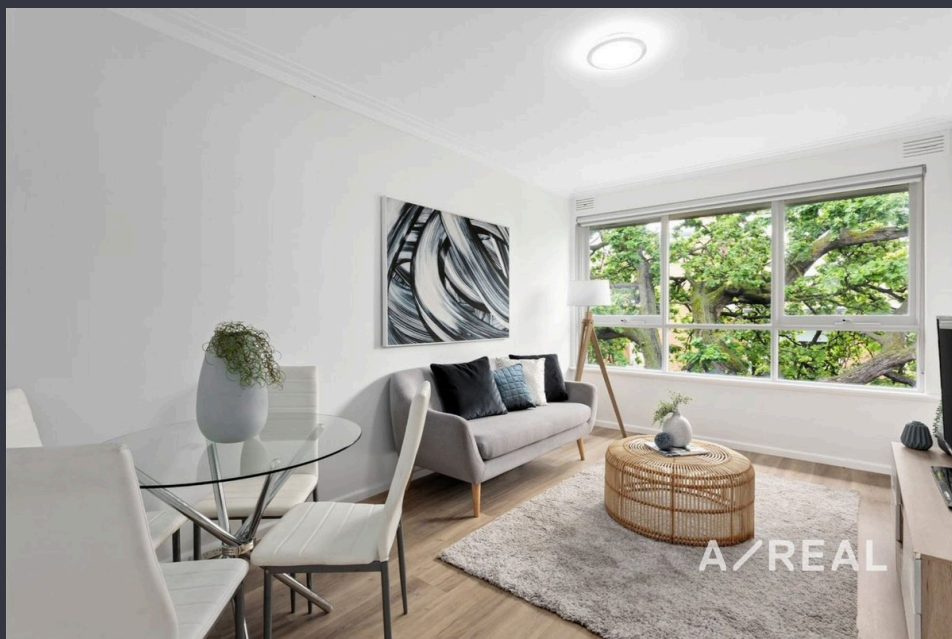


Exceptionally Spacious Top-Floor Haven Awaits



For Lease

10/52 Hotham Street, St Kilda East VIC 3183

 1  1  872sqm

\$410 per Week

For Lease

10/52 Hotham Street, St Kilda East VIC 3183

 1  1  872sqm

Exceptionally Spacious Top-Floor Haven Awaits

Scheduling your property inspection is now a breeze! Simply click on the "Book an Inspection" or "Request a Time" button to secure your appointment. You'll instantly receive a confirmation and be kept up-to-date with any alterations or cancellations concerning your scheduled visit. Please be aware, inspections may be subject to cancellation if no bookings are registered. Make your booking today and take the first step in finding your ideal home

Step into the warmth and comfort of this spacious apartment that seamlessly blends convenience with relaxation. The bedroom offers ample storage with built-in robes, while the cozy lounge provides a welcoming retreat with its heating feature for those chilly days.

Take a moment to unwind on your private balcony, a perfect spot to enjoy some fresh air and solitude. Soft carpeting throughout adds a touch of luxury, creating a cozy atmosphere that complements the overall design.

The well-appointed kitchen is equipped with gas cooking facili...



A/REAL



BOX HILL

Suite 3.4, Level 3, 990 Whitehorse Road, Box Hill. Victoria 3128 | 8686 8388

HAWTHORN EAST

33 Camberwell Road, Hawthorn. Victoria 3123 | 9818 8991

MELBOURNE CBD

Level 7, 99 Queen Street, Melbourne. VIC 3000 | 9818 8991

NORTH

Suites 4 & 5 High Street, Lalor. VIC 3075 | 03 9436 0888

POINT COOK

Entrance C4, Level 1, 2 Main Street, Point Cook. VIC 3030 | 8686 8338

SOUTH MORANG

29 Gorge Road, South Morang. VIC 3752 | 8804 5888

info@areal.com.au