

Spacious & Stylish 4-Bedroom Home



For Lease

2/38 Nepean St Broadmeadows VIC 3047

 2  1

\$470 per Week

For Lease

2/38 Nepean St Broadmeadows VIC 3047



Spacious & Stylish 4-Bedroom Home

Scheduling your property inspection is now a breeze! Simply click on the "Book an Inspection" or "Request a Time" button to secure your appointment. You'll instantly receive a confirmation and be kept up-to-date with any alterations or cancellations concerning your scheduled visit. Please be aware, inspections may be subject to cancellation if no bookings are registered. Make your booking today and take the first step in finding your ideal home

Embrace the opportunity to be the inaugural resident of this exquisite, 2-bedroom townhouse, poised in the tranquility of a quiet street yet strategically situated for ultimate convenience. Revel in the carpeted interiors, meticulously designed to provide both comfort and style.

This contemporary residence is ideally positioned with proximity to a plethora of amenities. A mere 1.9 kilometers away lies the bustling hub of Broadmeadows Shopping Centre and Station, ensuring that daily necessities and commuting needs are effortlessly met.

...





INSPECTION & APPLICATION PROCESS



VIEW LISTING ONLINE



GET IN TOUCH



ATTEND AN INSPECTION



APPLY ONLINE

Click the "Register" or "Book with Inspect Real Estate" button and enter your preferred contact details so that we can keep you up to date with any changes or cancellations to your booking.

If the advertised time does not suit: click "Get in Touch" or "Email" to submit your interest in the property. You will then be kept up to date about any future inspections.

Attend an inspection with one of our Leasing Specialists.

After your inspection, you will receive a link with instructions on how to apply online via 2Apply.

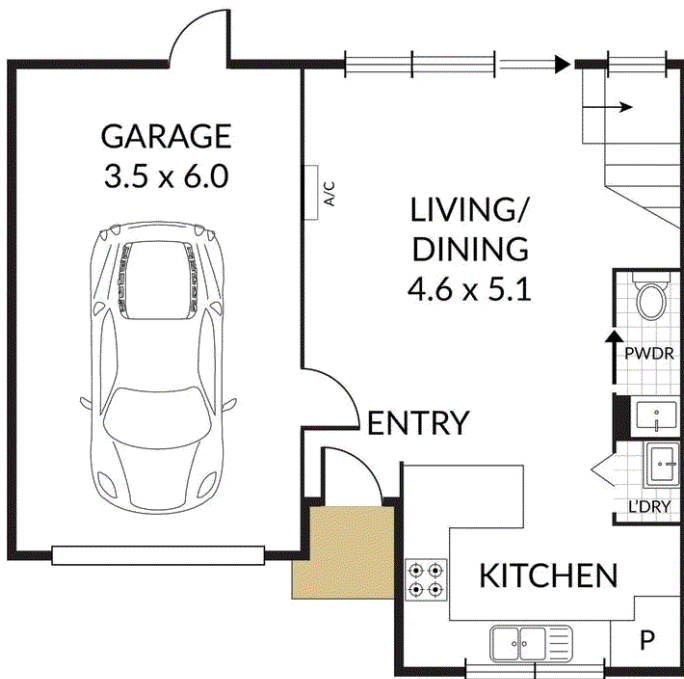
Visit www.2apply.com.au

Internal 92m² External 1m² Total 93m²

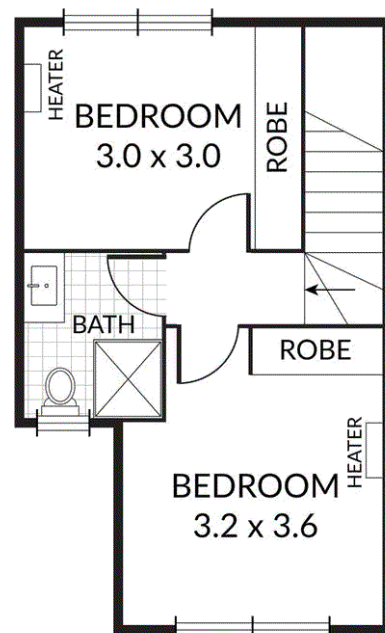
2/38 Nepean Street, **Broadmeadows**



2 x 1 x 1 x



GROUND FLOOR



FIRST FLOOR

BOX HILL

Suite 3.4, Level 3, 990 Whitehorse Road, Box Hill. Victoria 3128 | 8686 8388

HAWTHORN EAST

33 Camberwell Road, Hawthorn. Victoria 3123 | 9818 8991

MELBOURNE CBD

Level 7, 99 Queen Street, Melbourne. VIC 3000 | 9818 8991

NORTH

Suites 4 & 5 High Street, Lalor. VIC 3075 | 03 9436 0888

POINT COOK

Entrance C4, Level 1, 2 Main Street, Point Cook. VIC 3030 | 8686 8338

SOUTH MORANG

29 Gorge Road, South Morang. VIC 3752 | 8804 5888

info@areal.com.au