

A/REAL

A convenient one bedroom unit.



For Lease

10/5 Redan St St Kilda VIC 3182



1



1



731sqm

\$400 per Week

For Lease

10/5 Redan St St Kilda VIC 3182

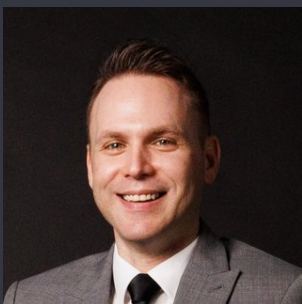
 1  1  731sqm

A convenient one bedroom unit.

Scheduling your property inspection is now a breeze! Simply click on the "Book an Inspection" or "Request a Time" button to secure your appointment. You'll instantly receive a confirmation and be kept up-to-date with any alterations or cancellations concerning your scheduled visit. Please be aware, inspections may be subject to cancellation if no bookings are registered. Make your booking today and take the first step in finding your ideal home

Tucked away at the rear of a quiet and well-maintained block, this one-bedroom apartment offers unbeatable value in a prime St Kilda location. Perfectly positioned just moments from Chapel Street's vibrant shopping and dining scene, Fitzroy Street nightlife, the iconic Astor Theatre, and tranquil Albert Park, you'll enjoy the best of Melbourne's inner-city lifestyle right at your doorstep. With Windsor Station and Dandenong Road trams nearby, commuting to the CBD is effortless.

Step inside and you'll find a bright, well-kept apartment wit...



Joshua Hellyer

Relationship Manager

03 9818 8991

joshua.hellyer@areal.com.au



A/REAL



INSPECTION & APPLICATION PROCESS



VIEW LISTING ONLINE



GET IN TOUCH



ATTEND AN INSPECTION



APPLY ONLINE

Click the "Register" or "Book with Inspect Real Estate" button and enter your preferred contact details so that we can keep you up to date with any changes or cancellations to your booking.

If the advertised time does not suit: click "Get in Touch" or "Email" to submit your interest in the property. You will then be kept up to date about any future inspections.

Attend an inspection with one of our Leasing Specialists.

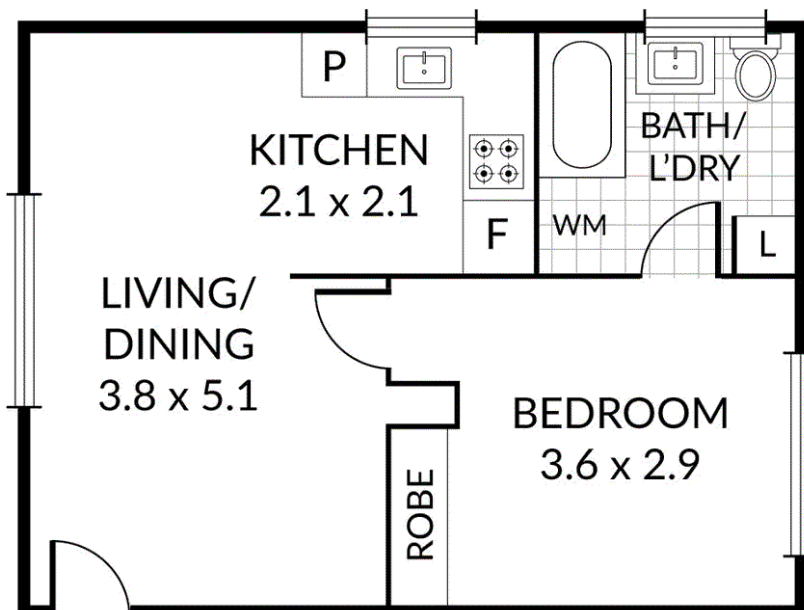
After your inspection, you will receive a link with instructions on how to apply online via 2Apply.

Visit www.2apply.com.au

Internal 33m² Total 33m²

10/5 Redan Street, **St Kilda**

1 x 1 x



BOX HILL

Suite 3.4, Level 3, 990 Whitehorse Road, Box Hill. Victoria 3128 | 8686 8388

HAWTHORN EAST

33 Camberwell Road, Hawthorn. Victoria 3123 | 9818 8991

MELBOURNE CBD

Level 7, 99 Queen Street, Melbourne. VIC 3000 | 9818 8991

NORTH

Suites 4 & 5 High Street, Lalor. VIC 3075 | 03 9436 0888

POINT COOK

Entrance C4, Level 1, 2 Main Street, Point Cook. VIC 3030 | 8686 8338

SOUTH MORANG

29 Gorge Road, South Morang. VIC 3752 | 8804 5888

info@areal.com.au