

## Modern Apartment in the Heart of Richmond



For Lease

225/8 Garfield St Richmond VIC 3121



\$575 per Week

## For Lease

225/8 Garfield St Richmond VIC 3121



### Modern Apartment in the Heart of Richmond

\*\*Scheduling your property inspection is now a breeze! Simply click on the "Book an Inspection" or "Request a Time" button to secure your appointment. You'll instantly receive a confirmation and be kept up-to-date with any alterations or cancellations concerning your scheduled visit. Please be aware, inspections may be subject to cancellation if no bookings are registered. Make your booking today and take the first step in finding your ideal home\*\*

This impressive apartment boasts a sleek kitchen with stainless steel appliances, a spacious open-plan living and dining area equipped with split system heating and cooling, and a private balcony perfect for relaxing. The large bedroom comes with built-in robes, while the modern bathroom and convenient laundry facilities within the apartment.

Located in the vibrant heart of Richmond, The HUB places you at the center of a dynamic lifestyle. Whether day or night, you'll be just minutes away from everything, including parks, gardens, bars, c...



### Johnson Tan

Senior Relationship Manager-Coverage Specialist

0420 846 041

03 9818 8991

johnson.tan@areal.com.au

A/REAL



## INSPECTION & APPLICATION PROCESS



VIEW LISTING ONLINE



WATCH VIDEO  
WALK-THROUGH TOUR



BOOK AN INSPECTION



If you would like to apply for this property, please follow these steps.

We strongly encourage you to watch the online walk-through video to determine if the property is suitable for you prior to booking an inspection.

Please click on "Book an Inspection" to register your interest and to ensure you are notified of any changes or cancellations

You may submit an online application easily by using 2Apply.

[View more Properties](#)



# UNFURNISHED PROPERTY

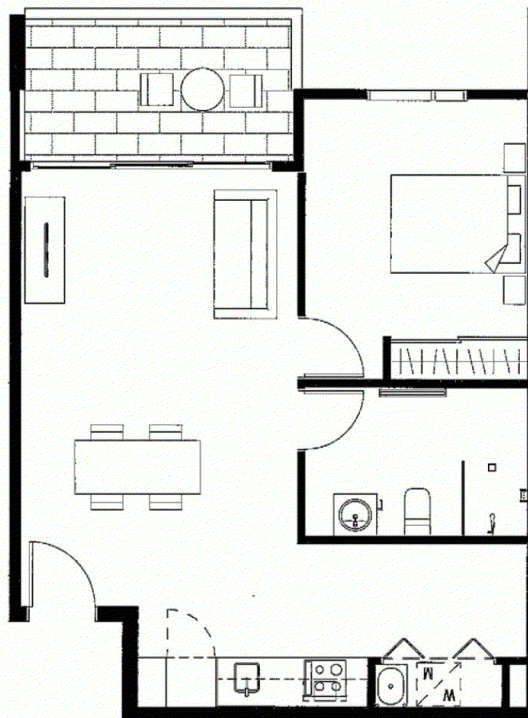
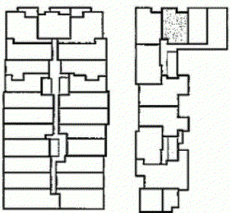


## GARFIELD STREET



**APARTMENT # 2.25**  
 TYPE: 1 Bed + 1 Bath  
 INTERNAL AREA: 57.88 m<sup>2</sup>  
 EXTERNAL AREA: 8.48 m<sup>2</sup>  
 TOTAL AREA: 66.36 m<sup>2</sup>

KEY PLAN



## BOX HILL

Suite 3.4, Level 3, 990 Whitehorse Road, Box Hill. Victoria 3128 | 8686 8388

## HAWTHORN EAST

33 Camberwell Road, Hawthorn. Victoria 3123 | 9818 8991

## MELBOURNE CBD

Level 7, 99 Queen Street, Melbourne. VIC 3000 | 9818 8991

## NORTH

Suites 4 & 5 High Street, Lalor. VIC 3075 | 03 9436 0888

## POINT COOK

Entrance C4, Level 1, 2 Main Street, Point Cook. VIC 3030 | 8686 8338

## SOUTH MORANG

29 Gorge Road, South Morang. VIC 3752 | 8804 5888

[info@areal.com.au](mailto:info@areal.com.au)