

Stunning 2-Bedroom Apartment in Camberwell Junction



For Lease

G13/565 Camberwell Rd Camberwell VIC 3124

 2  1  1714sqm

\$575 per Week

For Lease

G13/565 Camberwell Rd Camberwell VIC 3124

 2  1  1714sqm

Stunning 2-Bedroom Apartment in Camberwell Junction

Scheduling your property inspection is now a breeze! Simply click on the "Book an Inspection" or "Request a Time" button to secure your appointment. You'll instantly receive a confirmation and be kept up-to-date with any alterations or cancellations concerning your scheduled visit. Please be aware, inspections may be subject to cancellation if no bookings are registered. Make your booking today and take the first step in finding your ideal home

Discover this modern, light-filled 2-bedroom apartment located near the vibrant Camberwell Junction, just steps from cafes, restaurants, and shopping outlets. With high-quality fixtures, abundant natural light, and a low-maintenance lifestyle, this apartment offers the perfect blend of comfort and convenience.

Enjoy excellent transport options with Hartwell train station and nearby tram stops. Additional features include Reverse Cycle cooling & Heating, a large storage cage, bike rack, and ample visitor parking.

A/REAL

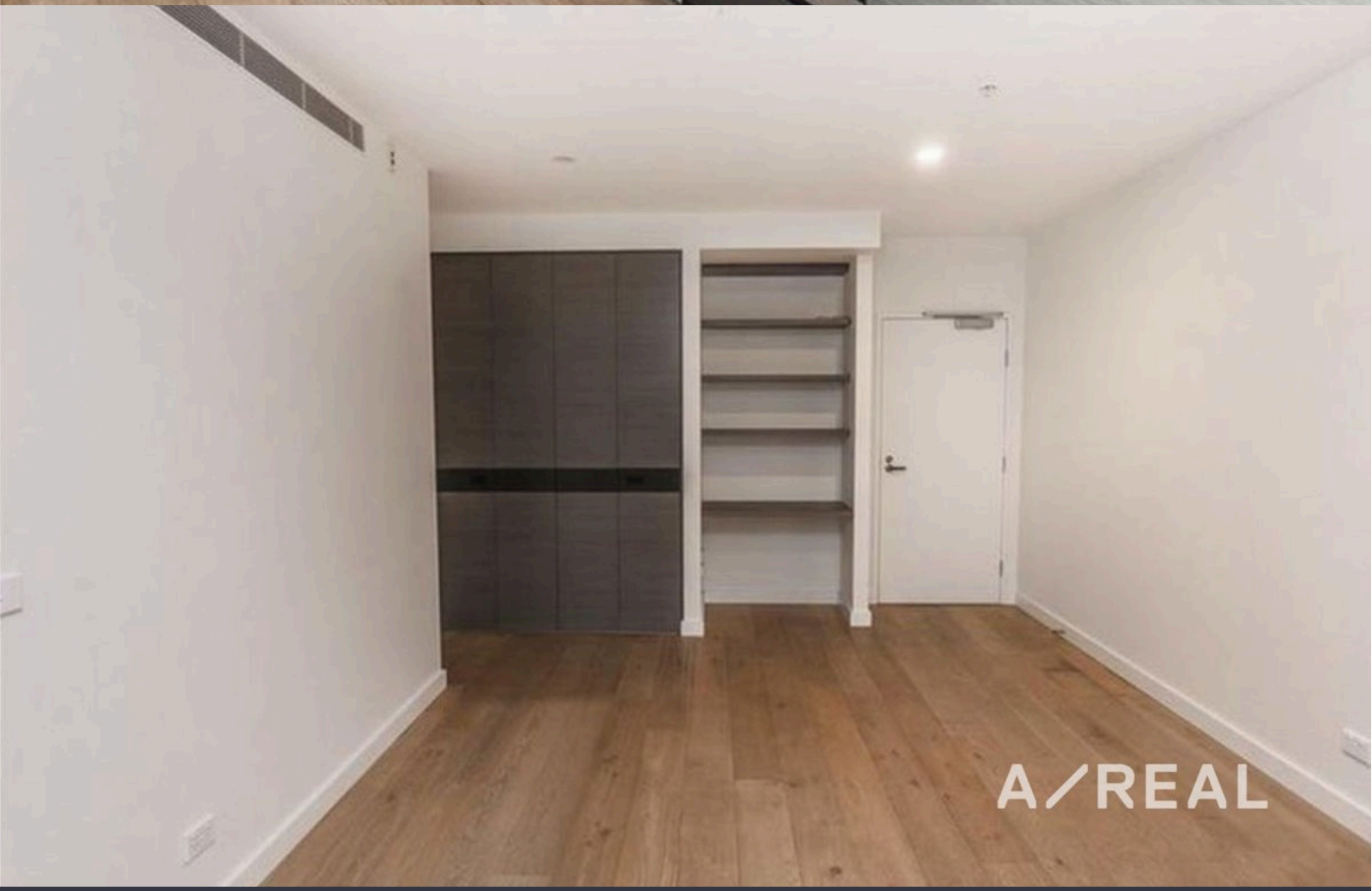


A/REAL



A/REAL

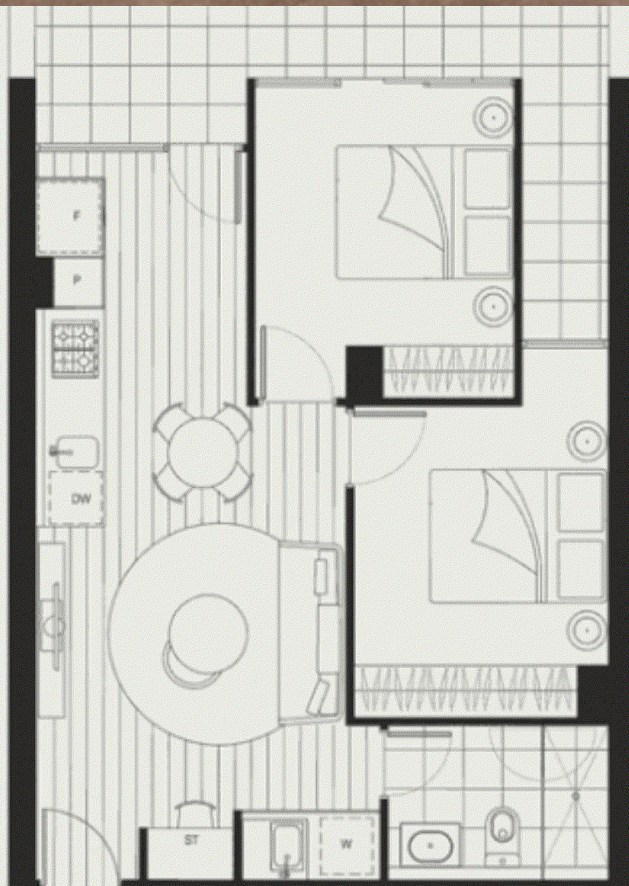
A/REAL



A/REAL



A/REAL



A/REAL

BOX HILL

Suite 3.4, Level 3, 990 Whitehorse Road, Box Hill. Victoria 3128 | 8686 8388

HAWTHORN EAST

33 Camberwell Road, Hawthorn. Victoria 3123 | 9818 8991

MELBOURNE CBD

Level 7, 99 Queen Street, Melbourne. VIC 3000 | 9818 8991

NORTH

Suites 4 & 5 High Street, Lalor. VIC 3075 | 03 9436 0888

POINT COOK

Entrance C4, Level 1, 2 Main Street, Point Cook. VIC 3030 | 8686 8338

SOUTH MORANG

29 Gorge Road, South Morang. VIC 3752 | 8804 5888

info@areal.com.au