

## Charming Family Home in Pakenham



For Lease

26 Studd Rd Pakenham VIC 3810

 4  2

\$600 per Week

## For Lease

26 Studd Rd Pakenham VIC 3810



### Charming Family Home in Pakenham

\*\*Scheduling your property inspection is now a breeze! Simply click on the "Book an Inspection" or "Request a Time" button to secure your appointment. You'll instantly receive a confirmation and be kept up-to-date with any alterations or cancellations concerning your scheduled visit. Please be aware, inspections may be subject to cancellation if no bookings are registered. Make your booking today and take the first step in finding your ideal home\*\*

Welcome to your new sanctuary at 26 Studd Road, Pakenham! This beautifully presented 4-bedroom home perfectly blends comfort and style, making it ideal for families and professionals alike.

As you step inside, you'll be greeted by a spacious, light-filled open-plan kitchen and living area—perfect for entertaining or relaxing after a long day. The modern kitchen boasts stainless steel appliances, ample storage, and a large island that invites culinary creativity.

The master bedroom is a true highlight, featuring a generous walk-in robe an...





## INSPECTION & APPLICATION PROCESS



VIEW LISTING ONLINE

If you would like to apply for this property, please follow these steps.



WATCH VIDEO  
WALK-THROUGH TOUR

We strongly encourage you to watch the online walk-through video to determine if the property is suitable for you prior to booking an inspection.



BOOK AN INSPECTION

Please click on "Book an Inspection" to register your interest and to ensure you are notified of any changes or cancellations



You may submit an online application easily by using 2Apply.

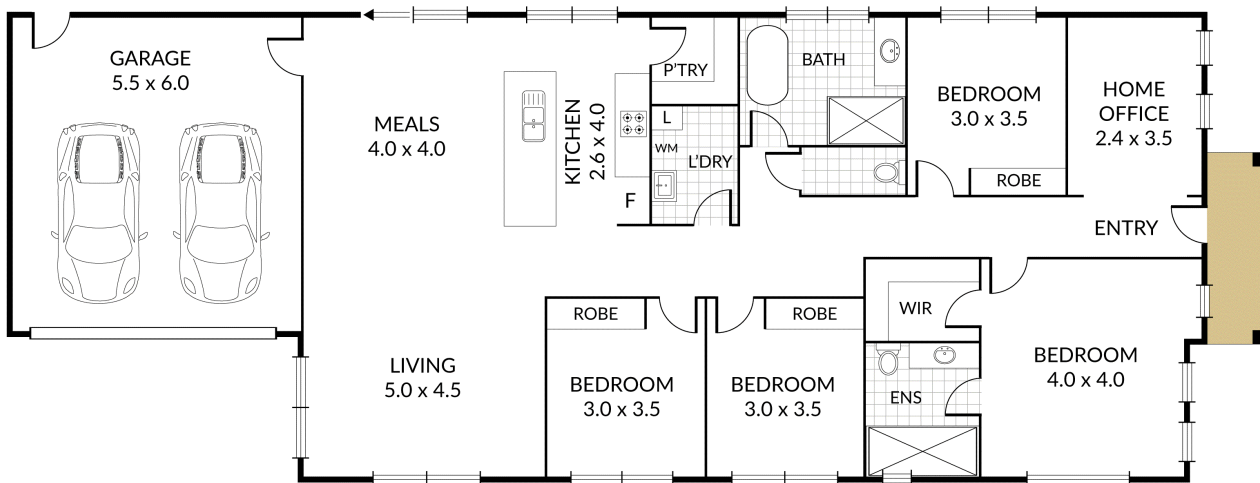
Internal 180m<sup>2</sup> External 43m<sup>2</sup> Total 223m<sup>2</sup>

4 x 2 x 2 x

26 Studd Road, **Packenham**



NORTH



## BOX HILL

Suite 3.4, Level 3, 990 Whitehorse Road, Box Hill. Victoria 3128 | 8686 8388

## HAWTHORN EAST

33 Camberwell Road, Hawthorn. Victoria 3123 | 9818 8991

## MELBOURNE CBD

Level 7, 99 Queen Street, Melbourne. VIC 3000 | 9818 8991

## NORTH

Suites 4 & 5 High Street, Lalor. VIC 3075 | 03 9436 0888

## POINT COOK

Entrance C4, Level 1, 2 Main Street, Point Cook. VIC 3030 | 8686 8338

## SOUTH MORANG

29 Gorge Road, South Morang. VIC 3752 | 8804 5888

[info@areal.com.au](mailto:info@areal.com.au)