

3 Bedder Family House, Comfort Living in Epping



For Lease

28 Church St Epping VIC 3076



↑m² 925sqm

\$520 per Week

For Lease

28 Church St Epping VIC 3076



3



1



925sqm

3 Bedder Family House, Comfort Living in Epping

Welcome to 28 Church Street, Epping—a charming home nestled in the heart of Epping Central, offering an unbeatable combination of convenience and lifestyle. This beautifully refurbished property features polished floorboards and a modern color palette, providing a fresh and welcoming ambiance. The spacious sunroom is perfect for entertaining or unwinding, while the generous garden offers the ideal space to grow your own vegetables or host outdoor gatherings.

As you step inside, you are greeted by a spacious, sunlit living area with large windows that allow for plenty of natural light, creating a warm and inviting atmosphere. The home features 3 generously sized bedrooms, each with ample storage, and 1 modern, well-appointed bathroom

Situated in a quiet, friendly neighborhood, this home is within walking distance of everything you need. Schools, public transport, shopping at Epping Central, churches, and medical centers are all just a stroll away. The added convenience of a carport ...



A/REAL



A/REAL



A/REAL

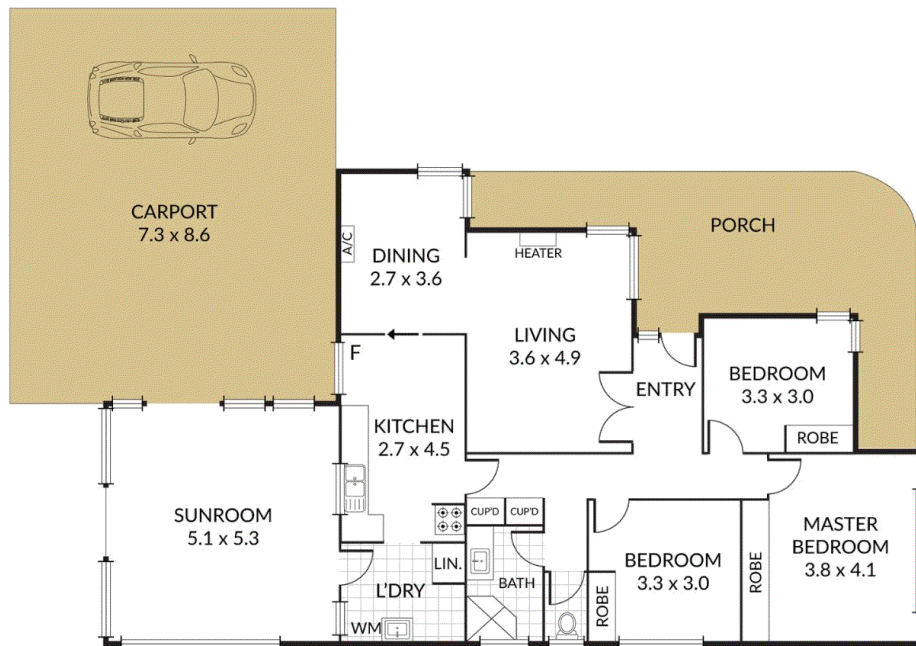


A/REAL

Internal 132m² External 62m² Total 194m²

28 Church Street, **Epping**

3 x 1 x 3 x



BOX HILL

Suite 3.4, Level 3, 990 Whitehorse Road, Box Hill. Victoria 3128 | 8686 8388

HAWTHORN EAST

33 Camberwell Road, Hawthorn. Victoria 3123 | 9818 8991

MELBOURNE CBD

Level 7, 99 Queen Street, Melbourne. VIC 3000 | 9818 8991

NORTH

Suites 4 & 5 High Street, Lalor. VIC 3075 | 03 9436 0888

POINT COOK

Entrance C4, Level 1, 2 Main Street, Point Cook. VIC 3030 | 8686 8338

SOUTH MORANG

29 Gorge Road, South Morang. VIC 3752 | 8804 5888

info@areal.com.au