

Modern Living in a Prime Location



For Lease

37 Growling Grass Drive, Clyde North VIC 3978

 3  2

\$575 per Week

For Lease

37 Growling Grass Drive, Clyde North VIC 3978

 3  2

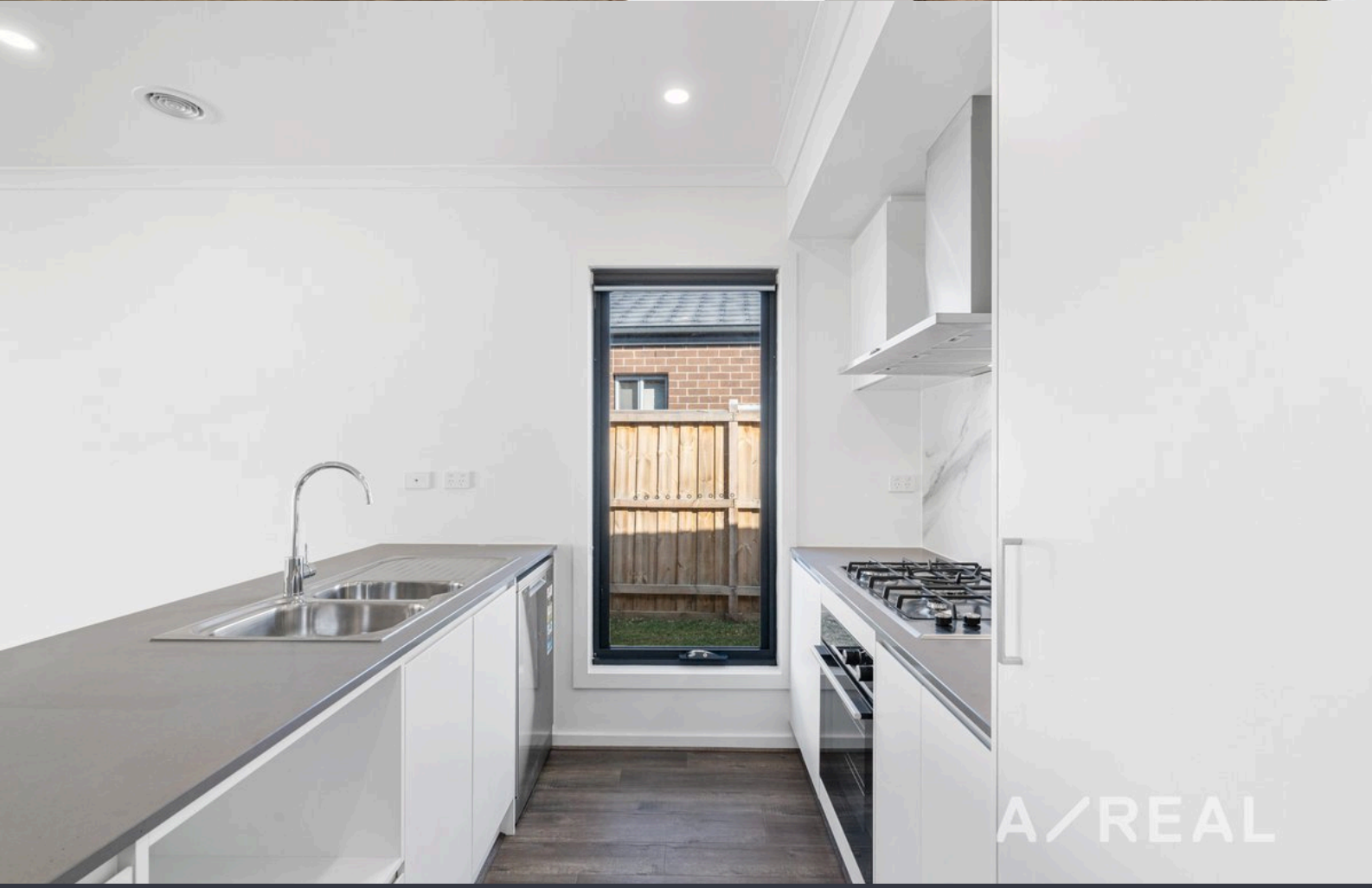
Modern Living in a Prime Location

Scheduling your property inspection is now a breeze! Simply click on the "Book an Inspection" or "Request a Time" button to secure your appointment. You'll instantly receive a confirmation and be kept up-to-date with any alterations or cancellations concerning your scheduled visit. Please be aware, inspections may be subject to cancellation if no bookings are registered. Make your booking today and take the first step in finding your ideal home

Located in the thriving Clyde community, this newly built 3-bedroom, 2-bathroom home offers a perfect blend of modern design and family-friendly living. The open-plan living area is spacious and filled with natural light, seamlessly connecting to a contemporary kitchen with sleek stainless steel appliances and ample storage. This living space flows out to a private, low-maintenance backyard, ideal for both entertaining and relaxing.

The master bedroom is a luxurious retreat, featuring his and hers walk-in robes and a stylish ensuite with ...





BOX HILL

Suite 3.4, Level 3, 990 Whitehorse Road, Box Hill. Victoria 3128 | 8686 8388

HAWTHORN EAST

33 Camberwell Road, Hawthorn. Victoria 3123 | 9818 8991

MELBOURNE CBD

Level 7, 99 Queen Street, Melbourne. VIC 3000 | 9818 8991

NORTH

Suites 4 & 5 High Street, Lalor. VIC 3075 | 03 9436 0888

POINT COOK

Entrance C4, Level 1, 2 Main Street, Point Cook. VIC 3030 | 8686 8338

SOUTH MORANG

29 Gorge Road, South Morang. VIC 3752 | 8804 5888

info@areal.com.au