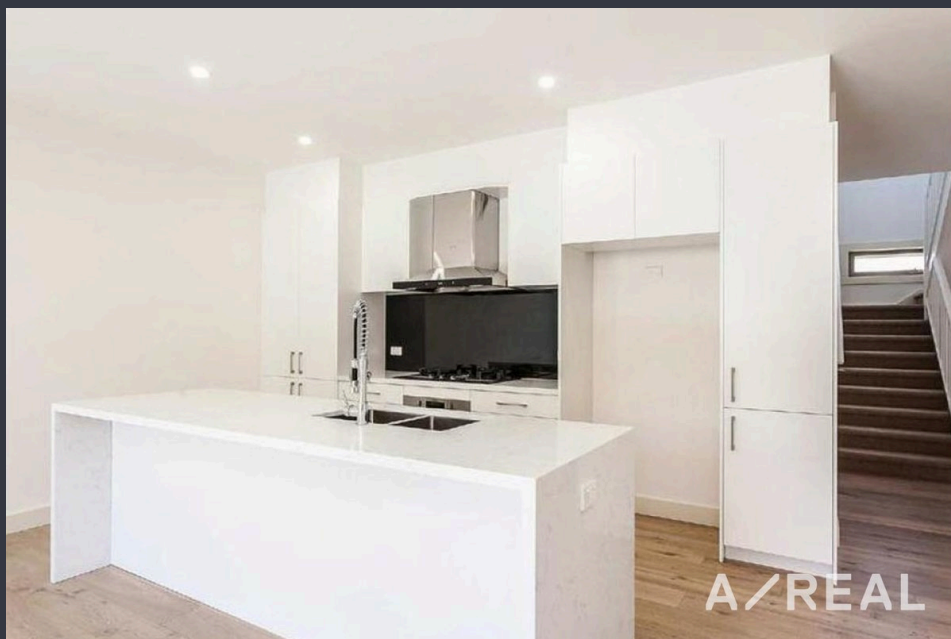


## Spacious Double-Story Family Haven with Modern Comforts and Prime Location



### For Lease

2A Jocelyn Court, Doncaster East VIC 3109

 4  2

\$900 per Week

## For Lease

2A Jocelyn Court, Doncaster East VIC 3109

 4  2

### Spacious Double-Story Family Haven with Modern Comforts and Prime Location

\*\*Scheduling your property inspection is now a breeze! Simply click on the "Book an Inspection" or "Request a Time" button to secure your appointment. You'll instantly receive a confirmation and be kept up-to-date with any alterations or cancellations concerning your scheduled visit. Please be aware, inspections may be subject to cancellation if no bookings are registered. Make your booking today and take the first step in finding your ideal home\*\*

This double-story townhouse has been thoughtfully designed for ideal family living. On the ground level, you'll find a master bedroom complete with an ensuite and walk-in robe. The large lounge room flows into a beautifully open-plan kitchen, which opens out to a private courtyard. There is also a separate powder room downstairs.

Upstairs features three additional bedrooms, each with built-in robes, and a spacious central bathroom.

The property is situated within the East Doncaster Secondary College and Beverley Hills Primary School zone...



A/REAL



A/REAL



A/REAL

## BOX HILL

Suite 3.4, Level 3, 990 Whitehorse Road, Box Hill. Victoria 3128 | 8686 8388

## HAWTHORN EAST

33 Camberwell Road, Hawthorn. Victoria 3123 | 9818 8991

## MELBOURNE CBD

Level 7, 99 Queen Street, Melbourne. VIC 3000 | 9818 8991

## NORTH

Suites 4 & 5 High Street, Lalor. VIC 3075 | 03 9436 0888

## POINT COOK

Entrance C4, Level 1, 2 Main Street, Point Cook. VIC 3030 | 8686 8338

## SOUTH MORANG

29 Gorge Road, South Morang. VIC 3752 | 8804 5888

[info@areal.com.au](mailto:info@areal.com.au)