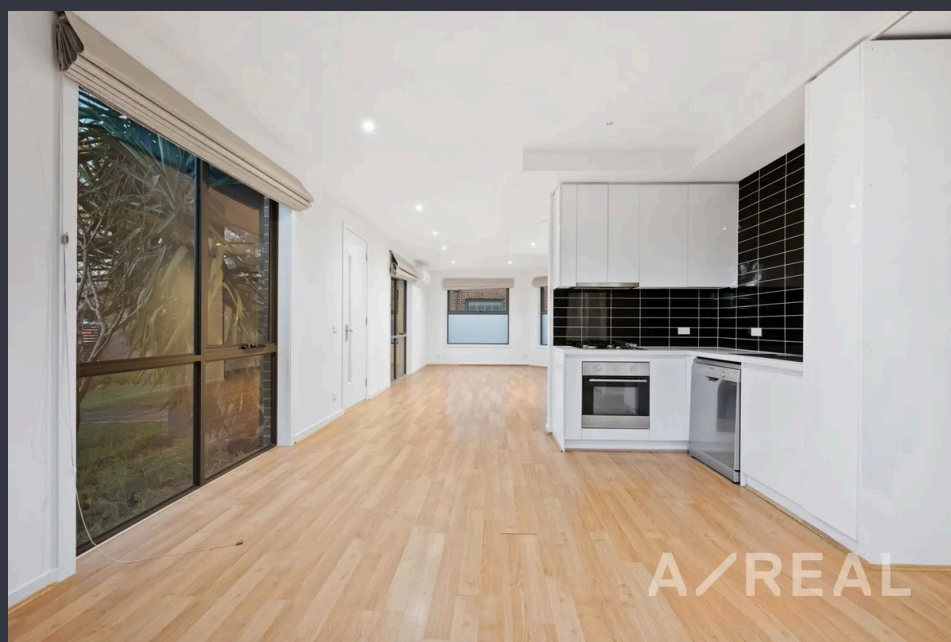


Spacious 2 Bedroom Townhouse with good natural light



For Lease

1/1122 North Road, Bentleigh East VIC 3165

 2  1

\$600 per Week

For Lease

1/1122 North Road, Bentleigh East VIC 3165

 2  1

Spacious 2 Bedroom Townhouse with good natural light

Scheduling your property inspection is now a breeze! Simply click on the "Book an Inspection" or "Request a Time" button to secure your appointment. You'll instantly receive a confirmation and be kept up-to-date with any alterations or cancellations concerning your scheduled visit. Please be aware, that inspections may be subject to cancellation if no bookings are registered. Make your booking today and take the first step in finding your ideal home

This stunning townhouse comes complete with a fantastic low-maintenance lifestyle. It has been thoughtfully designed so that it radiates style and comfort. The airy living space blends into the chic black and white kitchen which features stainless-steel appliances and glossy cupboard doors. The floor to ceiling windows throughout create a sense of bringing the outdoors in with landscaped garden and the large private AI fresco deck adds a retreat-like feel.



Rayna Hao

Senior Relationship Manager

03 9818 8991

rayna.hao@areal.com.au

A/REAL





BOX HILL

Suite 3.4, Level 3, 990 Whitehorse Road, Box Hill. Victoria 3128 | 8686 8388

HAWTHORN EAST

33 Camberwell Road, Hawthorn. Victoria 3123 | 9818 8991

MELBOURNE CBD

Level 7, 99 Queen Street, Melbourne. VIC 3000 | 9818 8991

NORTH

Suites 4 & 5 High Street, Lalor. VIC 3075 | 03 9436 0888

POINT COOK

Entrance C4, Level 1, 2 Main Street, Point Cook. VIC 3030 | 8686 8338

SOUTH MORANG

29 Gorge Road, South Morang. VIC 3752 | 8804 5888

info@areal.com.au