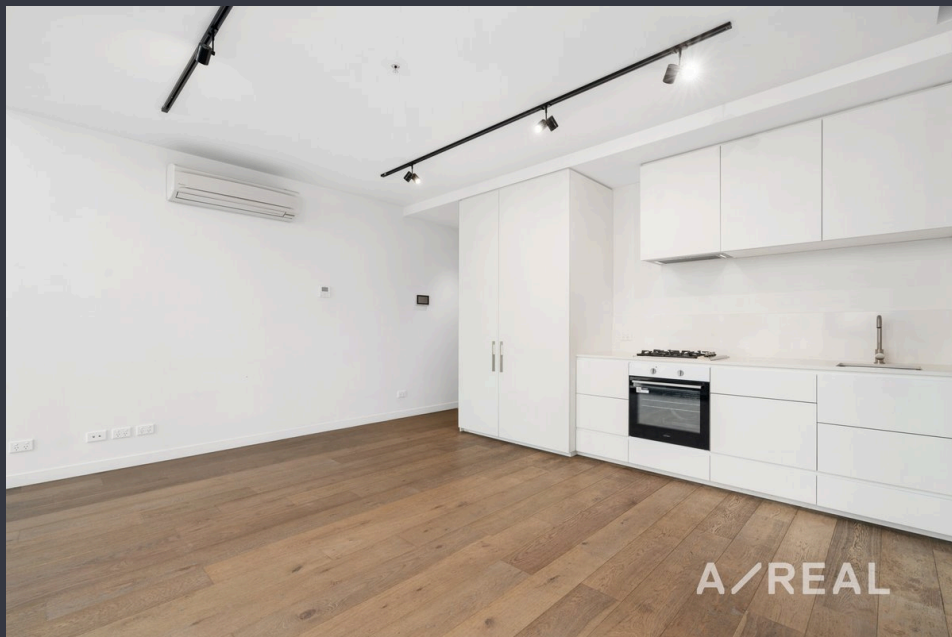


Designer Apartment With CBD Skyline View!



For Lease

713/65 Dudley Street, West Melbourne VIC 3003

 2  1

\$655 per Week

For Lease

713/65 Dudley Street, West Melbourne VIC 3003



Designer Apartment With CBD Skyline View!

Scheduling your property inspection is now a breeze! Simply click on the "Book an Inspection" or "Request a Time" button to secure your appointment. You'll instantly receive a confirmation and be kept up-to-date with any alterations or cancellations concerning your scheduled visit. Please be aware, inspections may be subject to cancellation if no bookings are registered. Make your booking today and take the first step in finding your ideal home

Welcome to your new home in the heart of West Melbourne! This charming 2-bedroom, 1-bath apartment offers a perfect blend of modern convenience and classic comfort. As you step inside, you'll be greeted by an open-plan living and dining area, boasting ample natural light that highlights the beautiful timber floors. The contemporary kitchen is equipped with sleek stainless steel appliances, stone benchtop, and plenty of storage.

The two queen-sized bedrooms are designed with relaxation in mind with built-in robes to accommodate all your st...





BOX HILL

Suite 3.4, Level 3, 990 Whitehorse Road, Box Hill. Victoria 3128 | 8686 8388

HAWTHORN EAST

33 Camberwell Road, Hawthorn. Victoria 3123 | 9818 8991

MELBOURNE CBD

Level 7, 99 Queen Street, Melbourne. VIC 3000 | 9818 8991

NORTH

Suites 4 & 5 High Street, Lalor. VIC 3075 | 03 9436 0888

POINT COOK

Entrance C4, Level 1, 2 Main Street, Point Cook. VIC 3030 | 8686 8338

SOUTH MORANG

29 Gorge Road, South Morang. VIC 3752 | 8804 5888

info@areal.com.au