

## Spacious Unit with Gleaming City Views!



## For Sale

1401/33 Rose Lane, Melbourne VIC 3000



\$330,000

## For Sale

1401/33 Rose Lane, Melbourne VIC 3000



### Spacious Unit with Gleaming City Views!

Towering above the bustling streets on the 14th floor, this stylish one-bedroom apartment in the heart of Melbourne offers a great CBD address and a relaxed urban lifestyle! Located in the luxurious 'Manhattan Tower', this well-appointed home boasts an entertainer's balcony with gleaming views of the city. This enviable location offers the best restaurants, convenient shopping and multiple transport options right at the door with Southern Cross Station situated directly opposite.

This beautifully designed home has a sophisticated and practical open-plan layout, stone bench tops, quality appliances and a fully tiled bathroom. Your year-round comfort is assured with double-glazed windows and air-conditioning. Stunning timber floors complement the sparkling cabinetry in the galley-style kitchen, with a magnificent mirrored splashback, lots of sleek handleless cupboards, and stainless steel appliances including a dishwasher and built-in microwave.

Step out from the main living area to ...



### Andy Yuan

Senior Sales Executive, Licensed Estate Agent, Auctioneer

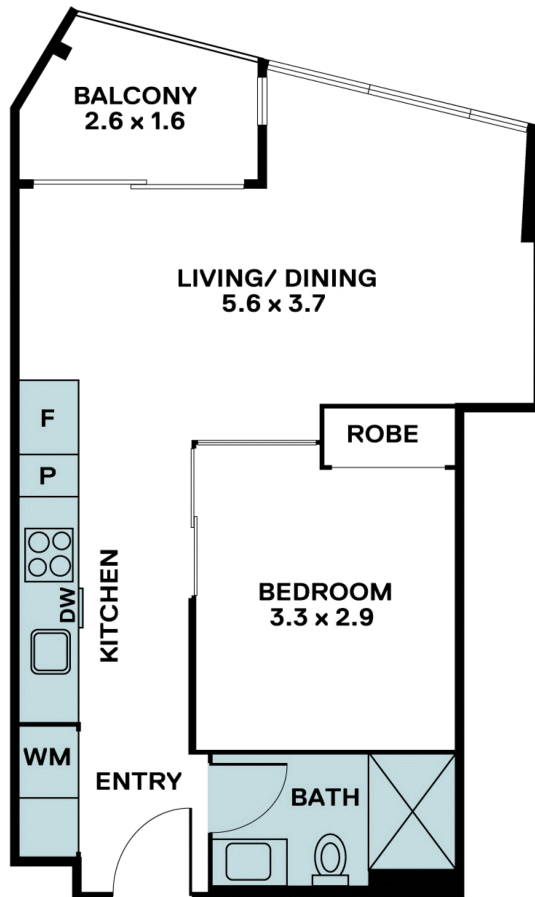
0406 217 388

03 8686 8388

[andy.yuan@areal.com.au](mailto:andy.yuan@areal.com.au)







Internal: 44 m<sup>2</sup>  
External: 4 m<sup>2</sup>  
Total Area: 48 m<sup>2</sup>



## BOX HILL

Suite 3.4, Level 3, 990 Whitehorse Road, Box Hill. Victoria 3128 | 8686 8388

## HAWTHORN EAST

33 Camberwell Road, Hawthorn. Victoria 3123 | 9818 8991

## MELBOURNE CBD

Level 7, 99 Queen Street, Melbourne. VIC 3000 | 9818 8991

## NORTH

Suites 4 & 5 High Street, Lalor. VIC 3075 | 03 9436 0888

## POINT COOK

Entrance C4, Level 1, 2 Main Street, Point Cook. VIC 3030 | 8686 8338

## SOUTH MORANG

29 Gorge Road, South Morang. VIC 3752 | 8804 5888

[info@areal.com.au](mailto:info@areal.com.au)