

Spacious Unit surrounded by Parklands



For Sale

110/1217 Centre Road, Oakleigh South VIC 3167

 2  1

\$420,000

For Sale

110/1217 Centre Road, Oakleigh South VIC 3167

 2  1

Spacious Unit surrounded by Parklands

Located in the heart of Oakleigh East this, two-bedroom, one-bathroom apartment offers a comfortable modern lifestyle in Melbourne's southeast and is sure to impress! Nestled amid landscaped gardens and courtyards you'll be spoiled for choice with the many surrounding parklands and a selection of restaurants, convenient shopping, and so much more with easy access to public transport and the main roads.

Inside there is a timeless décor, with a large living area for the lounge and dining with timber flooring, a neutral colour pallet and air-conditioning. You'll love the well-appointed sleek kitchen with gas cooking, stainless steel appliances, stone benchtops, a dishwasher and loads of cupboard space. The tiled bathroom has a separate Euro laundry and a large vanity with storage underneath.

The generously-sized bedrooms allow for peace and privacy with mirrored built-in robes to keep things tidy and plush carpets for added comfort. One bedroom also has louvred windows to allow as lit...



Jimmy Lim

Founder, Managing Director, Licensed Estate Agent

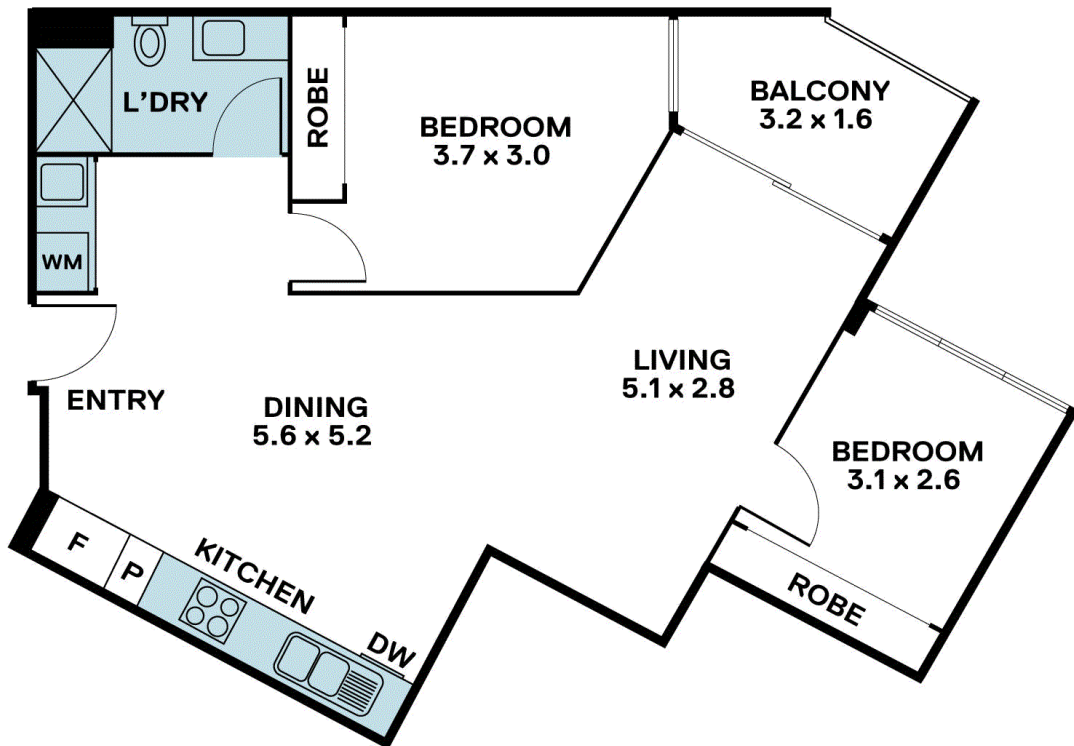
0415 089 332

03 8686 8388

jimmy.lim@areal.com.au







BOX HILL

Suite 3.4, Level 3, 990 Whitehorse Road, Box Hill. Victoria 3128 | 8686 8388

HAWTHORN EAST

33 Camberwell Road, Hawthorn. Victoria 3123 | 9818 8991

MELBOURNE CBD

Level 7, 99 Queen Street, Melbourne. VIC 3000 | 9818 8991

NORTH

Suites 4 & 5 High Street, Lalor. VIC 3075 | 03 9436 0888

POINT COOK

Entrance C4, Level 1, 2 Main Street, Point Cook. VIC 3030 | 8686 8338

SOUTH MORANG

29 Gorge Road, South Morang. VIC 3752 | 8804 5888

info@areal.com.au