

Stylish Low Maintenance Contemporary Home in Mount Waverley Secondary College Zone



For Sale

21A Stanley Avenue, Mount Waverley VIC 3149

 4  3

\$1,210,000

For Sale

21A Stanley Avenue, Mount Waverley VIC 3149

 4  3

Stylish Low Maintenance Contemporary Home in Mount Waverley Secondary College Zone

This sophisticated four-bedroom, three-and-a-half-bathroom home is sure to impress, with on-trend design, luxurious finishes and a great location in Mount Waverley. We enter this three-level home from a welcoming front porch to a light and bright open-plan living area. Accented by superb timber floors and a fresh neutral colour pallet. This area extends out to a sunny deck - great for enjoying the outdoors or entertaining.

The kitchen has stainless steel appliances, gas cooking, sleek handle-less cabinetry, and a stone waterfall-edge breakfast bar as a centrepiece in the heart of the home. There is also a separate powder room, and a spacious master suite with a walk-in robe and a large twin-vanity ensuite. All the bedrooms have split air-conditioning and plush carpets for tremendous comfort and privacy.

On the upper level, we find another two comfy bedrooms, a separate study and a floor-to-ceiling tiled bathroom with ample vanity space and a separate bath. You'll love the under-ho...



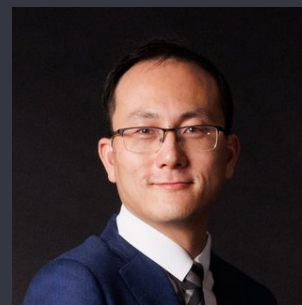
Kay Lim

Sales Executive, Licensed Estate Agent

0416 260 421

03 8686 8388

kay.lim@areal.com.au



Dave Tang

Sales Executive

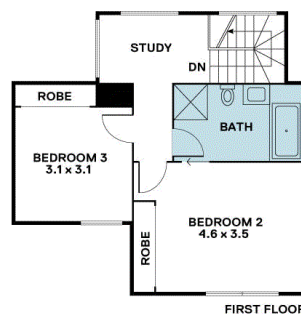
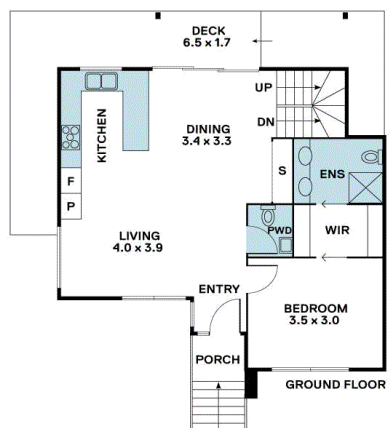
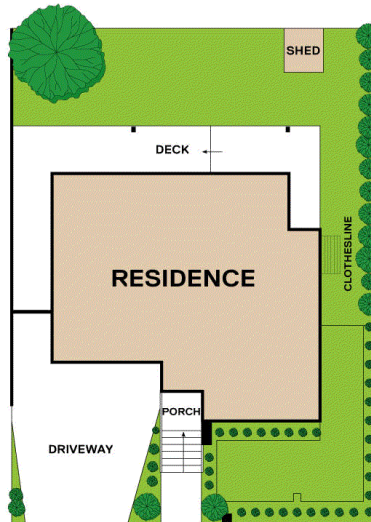
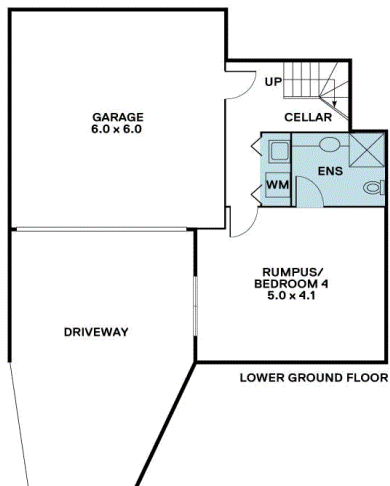
0432 523 853

03 8686 8388

dave.tang@areal.com.au







BOX HILL

Suite 3.4, Level 3, 990 Whitehorse Road, Box Hill. Victoria 3128 | 8686 8388

HAWTHORN EAST

33 Camberwell Road, Hawthorn. Victoria 3123 | 9818 8991

MELBOURNE CBD

Level 7, 99 Queen Street, Melbourne. VIC 3000 | 9818 8991

NORTH

Suites 4 & 5 High Street, Lalor. VIC 3075 | 03 9436 0888

POINT COOK

Entrance C4, Level 1, 2 Main Street, Point Cook. VIC 3030 | 8686 8338

SOUTH MORANG

29 Gorge Road, South Morang. VIC 3752 | 8804 5888

info@areal.com.au