

Stylish Two-Level Apartment With Impressive City Views



For Sale

508/423-435 Spencer Street, West Melbourne VIC 3003

 1  1

\$300,000

For Sale

508/423-435 Spencer Street, West Melbourne VIC 3003



Stylish Two-Level Apartment With Impressive City Views

Situated in the heart of the city is this spacious and light-filled two-level apartment. Boasting an open-plan layout with modern finishes and fixtures throughout and an enviable central location, this property is sure to capture the attention of a wide range of property buyers.

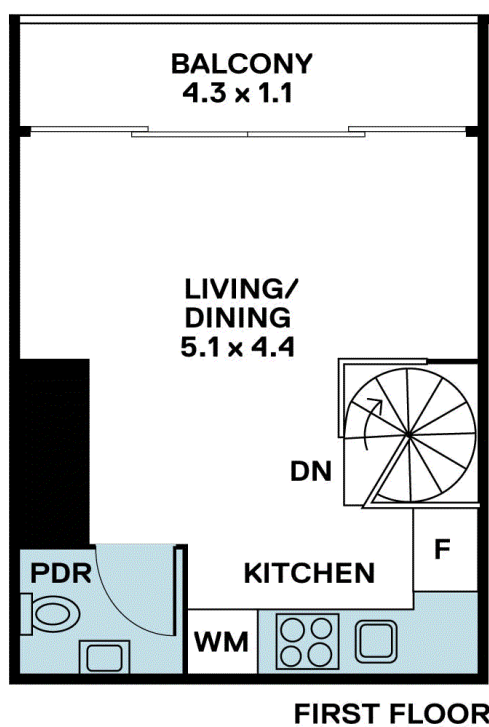
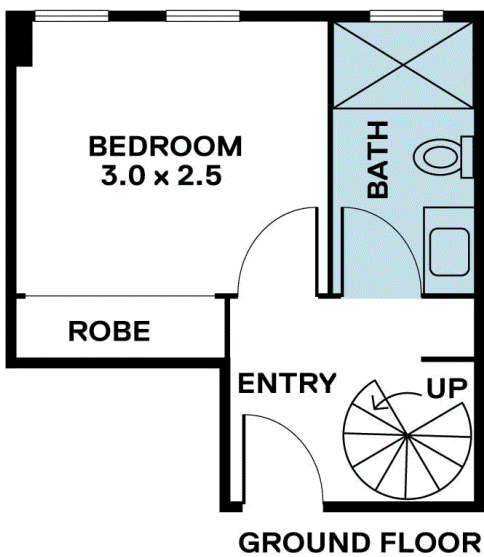
As you step inside you'll first come to the good-sized bedroom that features a built-in robe and plush carpet underfoot. Also on this level is the well-appointed modern bathroom with floor-to-ceiling tiles.

A spiral staircase leads you upstairs to where you'll find the open-plan kitchen and living area that feature stunning wide-plank flooring underfoot and air-conditioning for year-round comfort. This space is filled with an abundance of natural light thanks to the wall of floor-to-ceiling sliding glass doors that frame the city views perfectly.

These sliding doors lead outside to the private enclosed balcony which will be a wonderful spot to sip on your morning coffee as you enjoy the spectacular views an...







BOX HILL

Suite 3.4, Level 3, 990 Whitehorse Road, Box Hill. Victoria 3128 | 8686 8388

HAWTHORN EAST

33 Camberwell Road, Hawthorn. Victoria 3123 | 9818 8991

MELBOURNE CBD

Level 7, 99 Queen Street, Melbourne. VIC 3000 | 9818 8991

NORTH

Suites 4 & 5 High Street, Lalor. VIC 3075 | 03 9436 0888

POINT COOK

Entrance C4, Level 1, 2 Main Street, Point Cook. VIC 3030 | 8686 8338

SOUTH MORANG

29 Gorge Road, South Morang. VIC 3752 | 8804 5888

info@areal.com.au