



Contemporary single-level  
excellence, lifestyle &  
convenience



For Sale

12 Vautier Avenue, Mickleham VIC 3064



544sqm

\$750,000

## For Sale

12 Vautier Avenue, Mickleham VIC 3064



4



2

544sqm

### Contemporary single-level excellence, lifestyle & convenience

Discover contemporary excellence and stylish single-level living in this thoughtfully designed 4 bedroom, 2 bathroom residence, sure to capture the hearts of all modern families.

Warm neutral tones, natural light and a welcoming ambience highlight spacious interiors, with open-plan living/dining complementing a gourmet kitchen, featuring stone surfaces, breakfast bench and stainless steel appliances.

Every detail of this custom-designed home reflects quality and lifestyle allure, complete with a master bedroom fitted with a WIR and luxe ensuite, ducted heating, evaporative cooling, covered entertaining patio, generous rear yard and double garage.

A short walk to Discover Park, St Georges Boulevard buses and sought-after primary schools, with Merrifield Recreation Reserve, local childcare, Mickleham Secondary College and Merrifield City Shopping Centre all nearby, plus easy access to major amenities.

Disclaimer: We have in preparing the content used our best endeavours to ensure th...

#### Andy Yuan

Senior Sales Executive

0406 217 388

03 8686 8388

[andy.yuan@areal.com.au](mailto:andy.yuan@areal.com.au)

#### Lisa Tsang

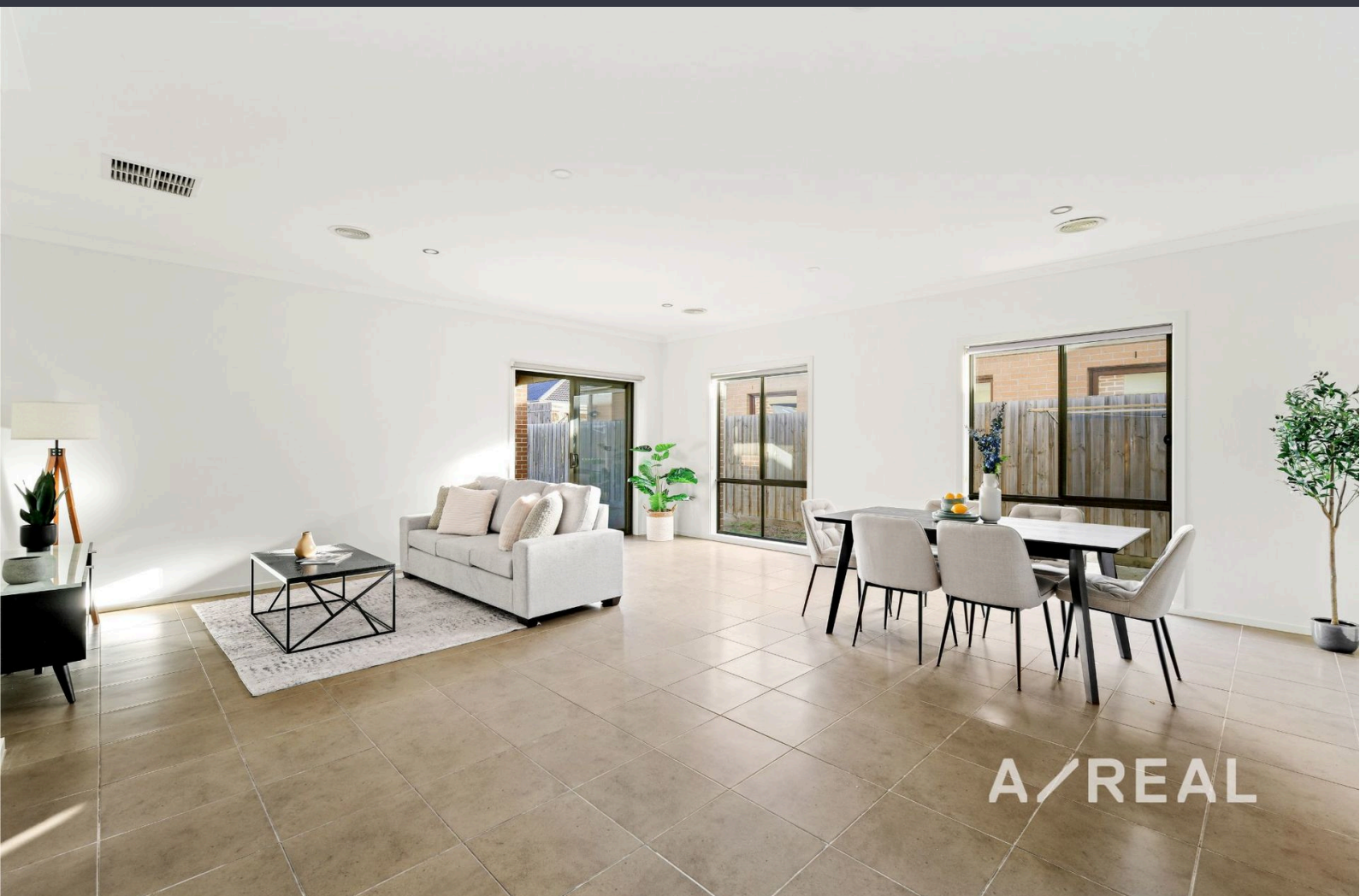
Sales Executive

0493 890 612

03 9818 8991

[lisa.tsang@areal.com.au](mailto:lisa.tsang@areal.com.au)

A/REAL



A/REAL





## BOX HILL

Suite 3.4, Level 3, 990 Whitehorse Road, Box Hill. Victoria 3128 | 8686 8388

## HAWTHORN EAST

33 Camberwell Road, Hawthorn. Victoria 3123 | 9818 8991

## MELBOURNE CBD

Level 7, 99 Queen Street, Melbourne. VIC 3000 | 9818 8991

## POINT COOK

Entrance C4, Level 1, 2 Main Street, Point Cook. VIC 3030 | 8686 8338

## SOUTH MORANG

29 Gorge Road, South Morang. VIC 3752 | 8804 5888

[info@areal.com.au](mailto:info@areal.com.au)