

## Entertainers Haven1



## For Lease

18 Quarterhorse Drive, South Morang VIC 3752

 3  2

\$450 per week

## For Lease

18 Quarterhorse Drive, South Morang VIC 3752



### Entertainers Haven!

Ideally located within easy access to Westfield Plenty Valley, Middle Gorge Train Station, reputable schools and gorgeous parklands, this superb townhouse offers the perfect combination of convenience and space.

Comprising 3 spacious upstairs bedrooms with BIR and central bathroom, the master bedroom enjoys the added convenience of a luxury WIR and ensuite.

Rear lounge and living quarters has a fully equipped kitchen boasting quality appliances and ample cabinetry, adjacent meals area plus much more.

Journey outside to a tranquil entertainers haven, fitted with an outdoor decked covered area providing a low maintenance lifestyle for you to enjoy all year round.

Blessed with an abundance of extra features which include the comforts of heating and cooling, ample storage options, single car garage with internal access plus off street parking,

An opportunity not to be missed!

#### DISCLAIMERS

\*It is a requirement to inspect the property prior to applying.

\*\*Inspection times and property ...



## Demi Georga

Business Development Director - South Morang Office

0402 605 588

03 8804 5888

[demi.georga@areal.com.au](mailto:demi.georga@areal.com.au)





 **firstnational**  
REAL ESTATE  
South Morang



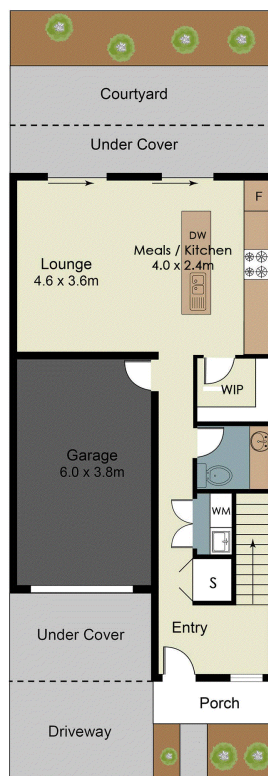
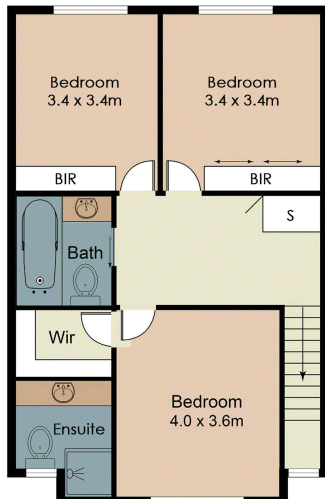
 **firstnational**  
REAL ESTATE  
South Morang




**firstnational**  
 REAL ESTATE  
 South Morang

## FLOOR PLAN

### SECOND FLOOR



## BOX HILL

Suite 3.4, Level 3, 990 Whitehorse Road, Box Hill. Victoria 3128 | 8686 8388

## HAWTHORN EAST

33 Camberwell Road, Hawthorn. Victoria 3123 | 9818 8991

## MELBOURNE CBD

Level 7, 99 Queen Street, Melbourne. VIC 3000 | 9818 8991

## NORTH

Suites 4 & 5 High Street, Lalor. VIC 3075 | 03 9436 0888

## POINT COOK

Entrance C4, Level 1, 2 Main Street, Point Cook. VIC 3030 | 8686 8338

## SOUTH MORANG

29 Gorge Road, South Morang. VIC 3752 | 8804 5888

[info@areal.com.au](mailto:info@areal.com.au)