

## Conveniently Located



## For Lease

6 Marjory Street, Thomastown VIC 3074

 3  1

\$425 per week

## For Lease

6 Marjory Street, Thomastown VIC 3074



## Conveniently Located

An opportunity to secure this much loved property in easily the best location the suburb of Lalor has to offer!

This location has it all with the convenience of this central location being walking distance to shops, primary / secondary schools and parklands.

Close to trains & buses, Pacific Epping, Northern Hospital, Ring Rd and approximately 18kms to the CBD!

With a well thought out plan and spacious design of 3 bedrooms, well equipped kitchen with an adjoining meals area, formal lounge room and multiple car lock up garage with an enormous amount of additional parking space.

Adding to its livability is heating and cooling for year - round enjoyment!

Outside, complete with an impressively large backyard with a pergola that serves to highlight the incredible untapped potential this property has to offer.

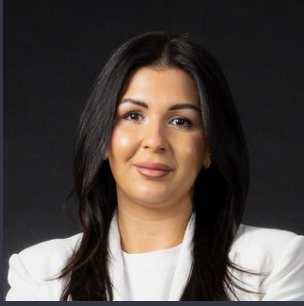
An opportunity like this is not to be missed,

Don't delay, inspect today!

## DISCLAIMERS

\*It is a requirement to inspect the property prior to applying.

\*\*Inspection times and pro...



### Demi Georga

Business Development Director - South Morang Office

0402 605 588

03 8804 5888

[demi.georga@areal.com.au](mailto:demi.georga@areal.com.au)

A / REAL



 firstnational  
REAL ESTATE  
South Morang



 firstnational  
REAL ESTATE  
South Morang



## BOX HILL

Suite 3.4, Level 3, 990 Whitehorse Road, Box Hill. Victoria 3128 | 8686 8388

## HAWTHORN EAST

33 Camberwell Road, Hawthorn. Victoria 3123 | 9818 8991

## MELBOURNE CBD

Level 7, 99 Queen Street, Melbourne. VIC 3000 | 9818 8991

## NORTH

Suites 4 & 5 High Street, Lalor. VIC 3075 | 03 9436 0888

## POINT COOK

Entrance C4, Level 1, 2 Main Street, Point Cook. VIC 3030 | 8686 8338

## SOUTH MORANG

29 Gorge Road, South Morang. VIC 3752 | 8804 5888

[info@areal.com.au](mailto:info@areal.com.au)