

## Wonderful One-Bedroom Apartment!



For Lease

216/360 Lygon Street, Brunswick East VIC 3057



\$440 per Week

## For Lease

216/360 Lygon Street, Brunswick East VIC 3057



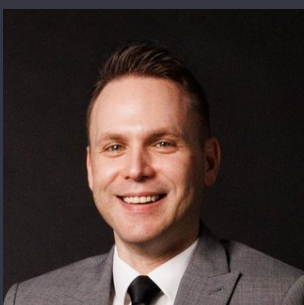
### Wonderful One-Bedroom Apartment!

To apply for this property, please enter your details to register for an inspection (if you do not register you will not receive updates regarding any changes and/or cancellations). Please note: we are unable to accept tenancy applications until the property has been inspected. Simply click on EMAIL AGENT, enter your details and receive instant details of the inspection times. We look forward to meeting you at the inspection!

This FULLY FURNISHED one-bedroom, second-floor apartment, conveniently located on Lygon Street, offers contemporary urban living and first-class lifestyle coupled with an impressive modern design. Lygon Street offers a sensational lifestyle with access to a wide variety of shops, restaurants, bars, cafes and public transport.

The apartment's modern kitchen oversees a contemporary living and dining area, opening to a spacious north facing balcony.

Other features include timber flooring throughout the living areas, large bedroom, stylish bathroom, dishwasher, Eu...



**Joshua Hellyer**

Relationship Manager

03 9818 8991

[joshua.hellyer@areal.com.au](mailto:joshua.hellyer@areal.com.au)

A/REAL



A/REAL





## 216

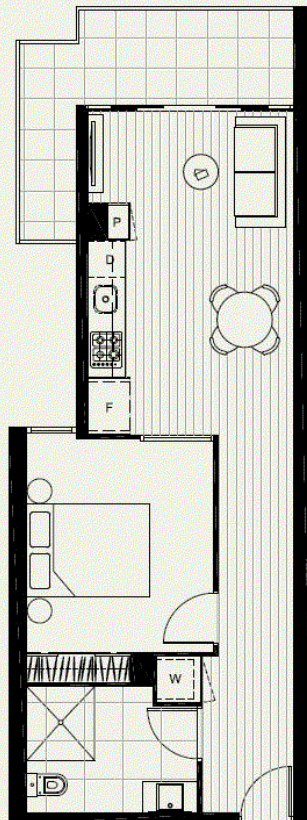
—  
**AREA 59m<sup>2</sup>**  
**BALCONY 9m<sup>2</sup>**

D DISHWASHER  
 F FRIDGE  
 P PANTRY  
 W WASHING MACHINE

—  
**LEVEL TWO**  
**KEY PLAN**



PLEASE NOTE THAT THIS FLOOR PLAN WAS PRODUCED PRIOR TO COMPLETION OF CONSTRUCTION AND IS INDICATIVE ONLY AND NOT TO SCALE. CHANGES MAY BE MADE DURING DEVELOPMENT. DIMENSIONS, FLOORBOARDS AND TILE SETOUT, FINISHES AND SPECIFICATIONS ARE SUBJECT TO CHANGE WITHOUT NOTICE IN ACCORDANCE WITH THE PROVISIONS OF THE CONTRACT OF SALE. THE FURNITURE DEPICTED IS NOT INCLUDED WITH ANY SALE AND SHOULD NOT BE TAKEN TO INDICATE THE FINAL POSITION OF POWER POINTS, TV CONNECTION POINTS AND THE LIKE. PROSPECTIVE PURCHASERS MUST RELY ON THEIR OWN ENQUIRIES. BULKHEADS NECESSARY FOR SERVICES AND STRUCTURE ARE NOT DEPICTED.



## BOX HILL

Suite 3.4, Level 3, 990 Whitehorse Road, Box Hill. Victoria 3128 | 8686 8388

## HAWTHORN EAST

33 Camberwell Road, Hawthorn. Victoria 3123 | 9818 8991

## MELBOURNE CBD

Level 7, 99 Queen Street, Melbourne. VIC 3000 | 9818 8991

## NORTH

Suites 4 & 5 High Street, Lalor. VIC 3075 | 03 9436 0888

## POINT COOK

Entrance C4, Level 1, 2 Main Street, Point Cook. VIC 3030 | 8686 8338

## SOUTH MORANG

29 Gorge Road, South Morang. VIC 3752 | 8804 5888

[info@areal.com.au](mailto:info@areal.com.au)