

Luxurious living close to
schools, shops, parks and
transport



For Sale

1 Kalonga Court, Glen Waverley VIC 3150

 4  3

\$1,439,000

For Sale

1 Kalonga Court, Glen Waverley VIC 3150

 4  3

Luxurious living close to schools, shops, parks and transport

Dreaming of a modern, stylish and spacious family haven that you'll be proud to call home? This remarkable residence offers the very best in contemporary living and is set on an enviable corner lot within a prized pocket of Glen Waverley.

The two-storey layout will tick every box on your ultimate property wishlist with something for everyone in the family.

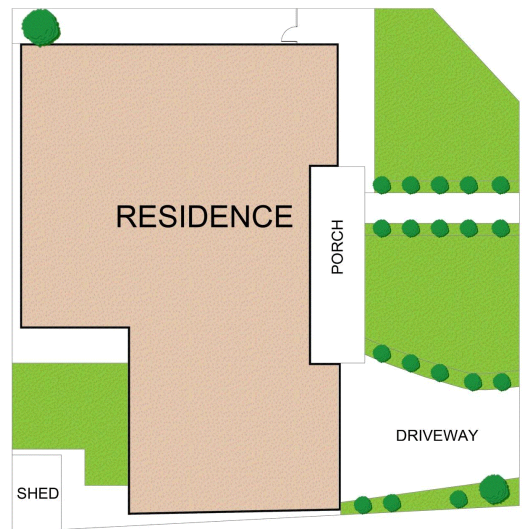
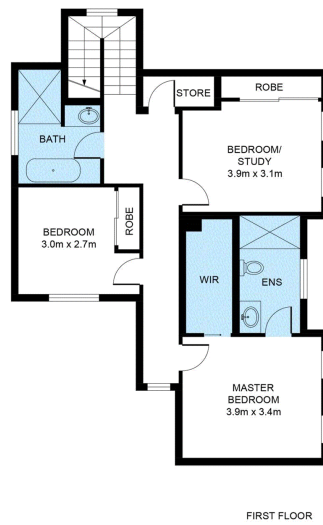
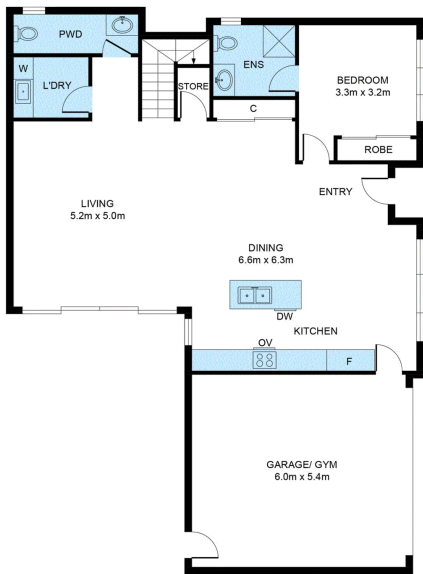
The heart of the home will surely be the open-plan and light-filled kitchen, dining and living room with gleaming timber floors, large windows and direct access to the deck. This effortless indoor-outdoor connection will appeal to anyone who loves to entertain as will the sleek chef's kitchen with a centre island, stainless steel appliances and plenty of storage.

A powder room and laundry are also on this main floor along with a bedroom boasting a built-in robe and ensuite that's ideal for accommodating guests. Three additional bedrooms are set on the upper level including your master with a walk-in robe and an ensuite. Bedrooms...

A / REAL







GROUND FLOOR

FIRST FLOOR



BOX HILL

Suite 3.4, Level 3, 990 Whitehorse Road, Box Hill. Victoria 3128 | 8686 8388

HAWTHORN EAST

33 Camberwell Road, Hawthorn. Victoria 3123 | 9818 8991

MELBOURNE CBD

Level 7, 99 Queen Street, Melbourne. VIC 3000 | 9818 8991

NORTH

Suites 4 & 5 High Street, Lalor. VIC 3075 | 03 9436 0888

POINT COOK

Entrance C4, Level 1, 2 Main Street, Point Cook. VIC 3030 | 8686 8338

SOUTH MORANG

29 Gorge Road, South Morang. VIC 3752 | 8804 5888

info@areal.com.au