

Virtually inspect NOW with our  
3D scan!



## For Lease

125/2 Golding Street, Hawthorn VIC 3122



\$370 per Week

## For Lease

125/2 Golding Street, Hawthorn VIC 3122



Virtually inspect NOW with our 3D scan!

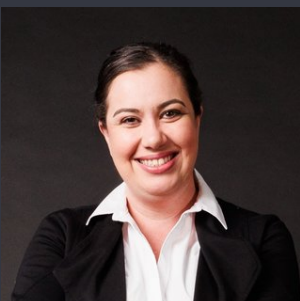
### IMPORTANT COVID-19 INFO REGARDING OPEN HOMES:

Open for Inspection Schedule: Saturday, 6th of February at 11 - 11:10 am

Private Inspections are also available. Please call Kathy Vi at 0429 698 461 to arrange. The only prerequisite is that you have viewed the 360 3D tour available by pressing the play/3D button above.

Featuring premium fittings and fixtures throughout, stylish mixtures of carpet and floorboards, great sized living spaces with plenty of natural light, bedrooms with BIRs and a study desk, fully equipped kitchens with stone benchtops and stainless steel European appliances, Sparkling modern bathrooms, European laundry and floor to ceiling glass doors leading to ample balcony boasting spectacular views.

Building facilities include secured entry, two luxurious lobbies complete with high ceilings and warm lighting, on-site building management, bicycle racks, secure car parking and storage cages and last but not least the beautiful 850sqm Atrium Garden featuring four separ...



**Lauren Allan**

Leasing Specialist

03 9818 8991

lauren.allan@areal.com.au





## BOX HILL

Suite 3.4, Level 3, 990 Whitehorse Road, Box Hill. Victoria 3128 | 8686 8388

## HAWTHORN EAST

33 Camberwell Road, Hawthorn. Victoria 3123 | 9818 8991

## MELBOURNE CBD

Level 7, 99 Queen Street, Melbourne. VIC 3000 | 9818 8991

## NORTH

Suites 4 & 5 High Street, Lalor. VIC 3075 | 03 9436 0888

## POINT COOK

Entrance C4, Level 1, 2 Main Street, Point Cook. VIC 3030 | 8686 8338

## SOUTH MORANG

29 Gorge Road, South Morang. VIC 3752 | 8804 5888

[info@areal.com.au](mailto:info@areal.com.au)