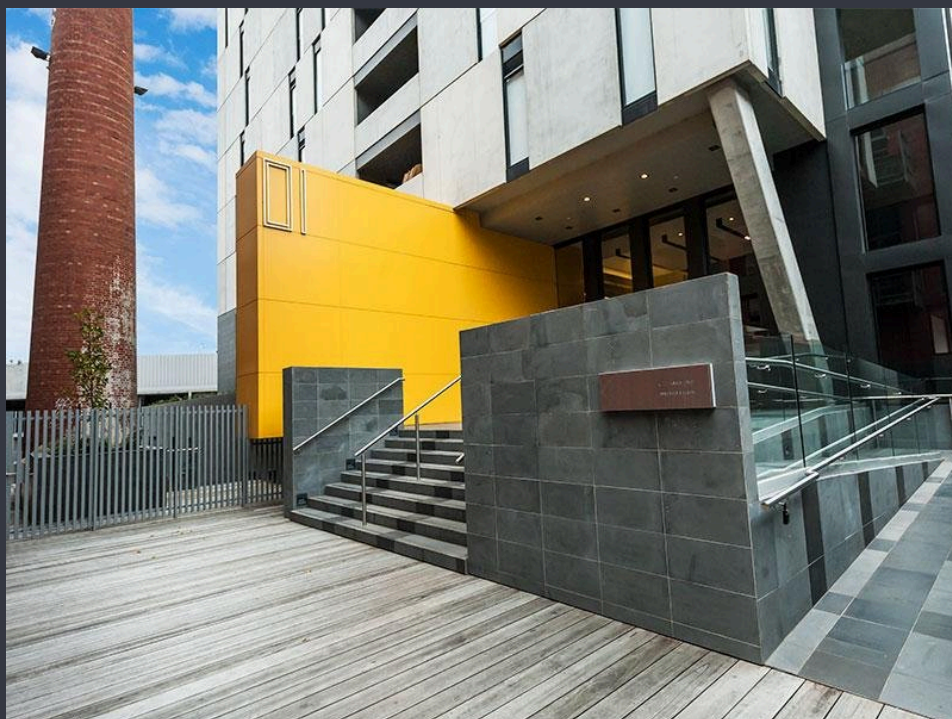


## Right On The River In RIVIERE! Stunning 1 bedroom apartment!



## For Lease

H209/12 Trenerry Crescent, Abbotsford VIC 3067



1



1

\$360 per Week

## For Lease

H209/12 Trenerry Crescent, Abbotsford VIC 3067



1



1

**Right On The River In RIVIERE! Stunning 1 bedroom apartment!**

Open Inspection: Saturday 4th June 10:20am - 10:35am

Located right on Melbourne's iconic Yarra River, as new luxury apartment with everything you have been searching for!

Featuring stylish hardwood timber flooring, spacious lounge with plenty of natural light, fully equipped modern kitchen with s/s appliances, large sparkling bathroom with laundry facilities, bedroom with BIR, heating/cooling and great sized balcony boasting spectacular views!

Building facilities include, security entrance, communal courtyard and secure car space with bike rack.

Ideally located, surrounded by rural beauty yet with the inner city also at your feet. A short distance to Richmond's bustling Victoria Street, Victoria gardens shopping centre, Public transport, parklands, shopping and plenty more!

To APPLY, you must INSPECT the property FIRST. Its easy, simply click on EMAIL AGENT, enter your details and receive instant details of the next inspection time.

Please register to inspect this property. Whe...

A/REAL





## BOX HILL

Suite 3.4, Level 3, 990 Whitehorse Road, Box Hill. Victoria 3128 | 8686 8388

## HAWTHORN EAST

33 Camberwell Road, Hawthorn. Victoria 3123 | 9818 8991

## MELBOURNE CBD

Level 7, 99 Queen Street, Melbourne. VIC 3000 | 9818 8991

## POINT COOK

Entrance C4, Level 1, 2 Main Street, Point Cook. VIC 3030 | 8686 8338

## SOUTH MORANG

29 Gorge Road, South Morang. VIC 3752 | 8804 5888

[info@areal.com.au](mailto:info@areal.com.au)