

Virtually inspect NOW with our  
3D scan! - Accepting 6 month  
lease



## For Lease

521A/30-34 Bray Street, South Yarra VIC 3141

 1  1

\$280 per Week

## For Lease

521A/30-34 Bray Street, South Yarra VIC 3141



Virtually inspect NOW with our 3D scan! - Accepting 6 month lease

### IMPORTANT COVID-19 INFO REGARDING OPEN HOMES:

Private Inspections are available throughout lockdown. Please call Joshua Hellyer at 0410 656 061 to arrange. The only prerequisite is that you have viewed the 360 3D tour available by pressing the play/3D button above.

This light-filled apartment is situated in a prime South Yarra location only 78 meters from Chapel Street shops, 270 meters from the renown Jam Factory and only minutes walk to South Yarra train station.

### Included are

- AC cooling/heating
- Gas stove top
- Dish Washer
- Laundry Taps
- Queen bed frame provided (pull down) and curtained off.
- Private with uninhibited view of the City. (NYE fireworks, Hot Air balloon viewing?)

This studio apartment has the lot including a Queen Bed that folds away for the extra entertaining area! Galley style kitchen with quality stainless steel appliances including dish draw, gas cooktop

and multi-functional oven, ample storage, pantry and stone bench tops as well as a European lau...

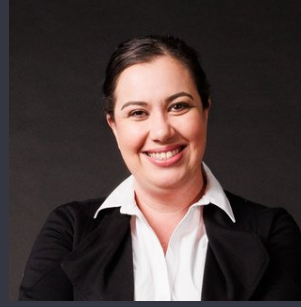


**Joshua Hellyer**

Relationship Manager

03 9818 8991

[joshua.hellyer@areal.com.au](mailto:joshua.hellyer@areal.com.au)



**Lauren Allan**

Leasing Specialist

03 9818 8991

[lauren.allan@areal.com.au](mailto:lauren.allan@areal.com.au)





## BOX HILL

Suite 3.4, Level 3, 990 Whitehorse Road, Box Hill. Victoria 3128 | 8686 8388

## HAWTHORN EAST

33 Camberwell Road, Hawthorn. Victoria 3123 | 9818 8991

## MELBOURNE CBD

Level 7, 99 Queen Street, Melbourne. VIC 3000 | 9818 8991

## NORTH

Suites 4 & 5 High Street, Lalor. VIC 3075 | 03 9436 0888

## POINT COOK

Entrance C4, Level 1, 2 Main Street, Point Cook. VIC 3030 | 8686 8338

## SOUTH MORANG

29 Gorge Road, South Morang. VIC 3752 | 8804 5888

[info@areal.com.au](mailto:info@areal.com.au)