

Luxurious Townhouse in a Prime Location with Modern Comforts



For Lease

3/53 Astley St Templestowe Lower VIC 3107

 4  4

\$880 per Week

For Lease

3/53 Astley St Templestowe Lower VIC 3107

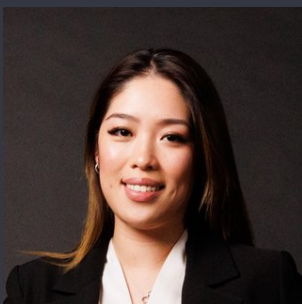


Luxurious Townhouse in a Prime Location with Modern Comforts

Scheduling your property inspection is now a breeze! Simply click on the "Book an Inspection" or "Request a Time" button to secure your appointment. You'll instantly receive a confirmation and be kept up-to-date with any alterations or cancellations concerning your scheduled visit. Please be aware, inspections may be subject to cancellation if no bookings are registered. Make your booking today and take the first step in finding your ideal home

Step into luxury with this beautifully designed 4-bedroom, 4-bathroom home located in the heart of Templestowe Lower. Perfectly suited for families or professionals, this modern residence combines sophisticated style with everyday comfort. Each of the spacious bedrooms features its own private ensuite, offering a high level of privacy and convenience for every occupant.

The home is thoughtfully designed with two expansive living areas positioned on opposite ends of the first floor, allowing you the flexibility to create distinct spaces fo...



Hilary Ho

Relationship Manager

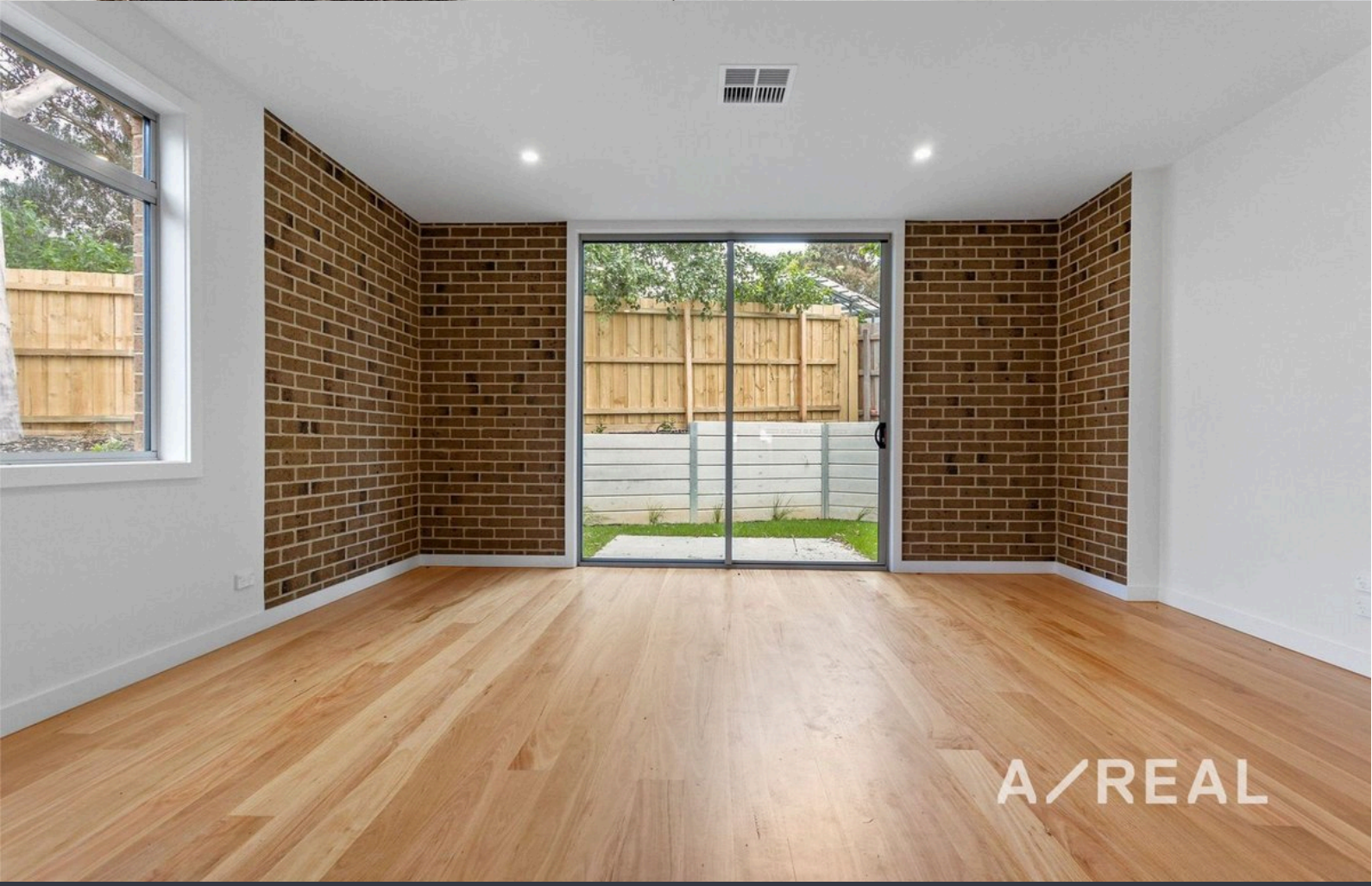
03 9818 8991

hilary.ho@areal.com.au

A/REAL



A/REAL



BOX HILL

Suite 3.4, Level 3, 990 Whitehorse Road, Box Hill. Victoria 3128 | 8686 8388

HAWTHORN EAST

33 Camberwell Road, Hawthorn. Victoria 3123 | 9818 8991

MELBOURNE CBD

Level 7, 99 Queen Street, Melbourne. VIC 3000 | 9818 8991

NORTH

Suites 4 & 5 High Street, Lalor. VIC 3075 | 03 9436 0888

POINT COOK

Entrance C4, Level 1, 2 Main Street, Point Cook. VIC 3030 | 8686 8338

SOUTH MORANG

29 Gorge Road, South Morang. VIC 3752 | 8804 5888

info@areal.com.au