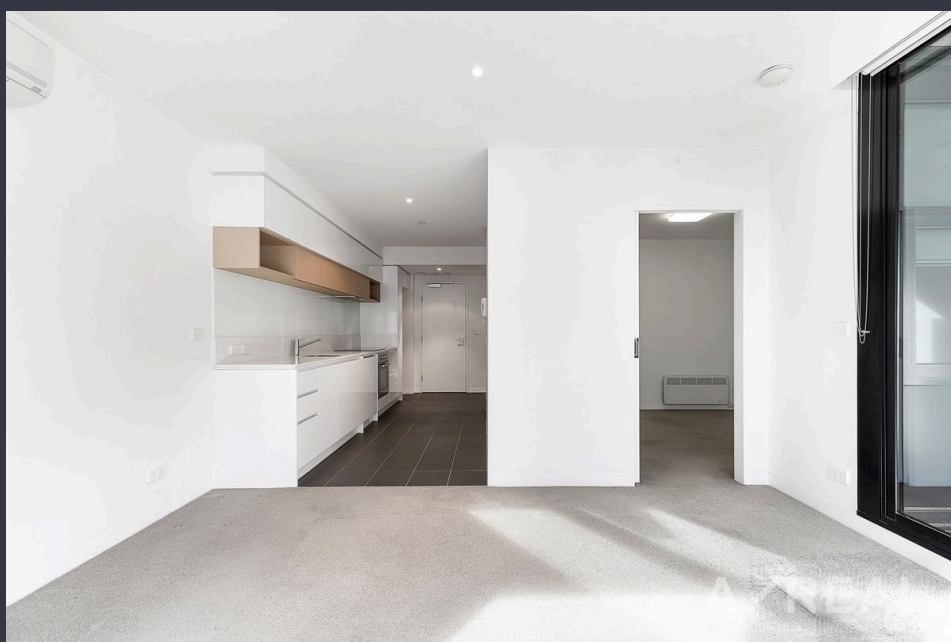


Refined Urban Retreat – Premium One-Bedroom in the Heart of Hawthorn



For Lease

223/311 Burwood Road, Hawthorn VIC 3122



\$525 per Week

For Lease

223/311 Burwood Road, Hawthorn VIC 3122



Refined Urban Retreat – Premium One-Bedroom in the Heart of Hawthorn

Scheduling your property inspection is now a breeze! Simply click on the "Book an Inspection" or "Request a Time" button to secure your appointment. You'll instantly receive a confirmation and be kept up-to-date with any alterations or cancellations concerning your scheduled visit. Please be aware, inspections may be subject to cancellation if no bookings are registered. Make your booking today and take the first step in finding your ideal home

An exceptional address for those who appreciate quality, this one-bedroom residence combines sophisticated design with an unrivalled Hawthorn lifestyle. Every detail has been crafted for comfort and elegance – from the sun-drenched living area and plush carpeted bedroom with built-in robes, to the designer kitchen featuring stone benchtops and premium European appliances. A sleek, contemporary bathroom with integrated laundry facilities and floor-to-ceiling glass doors leading to a private balcony complete the picture of modern refinement....

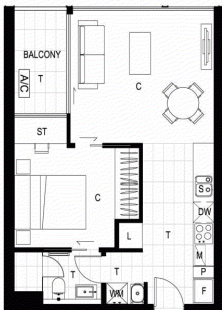






ATRIA

APARTMENTS HAWTHORN
www.atria.com.au



Level	L02
Apartment Number	B2.23
No. of Bedrooms	1
No. of Bathrooms	1
Estimated Area	
Floor Area	- 47 m ²
Balcony Area	- 5 m ²
Total Area	- 52 m ²

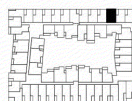
Car Space
1

Developed By:



CAYDON
T + 613 9416 3400
F + 613 9416 3404
34 STANLEY STREET
COLLINGWOOD VIC 3066
www.caydon.com.au

Key Plan



Dimensions and areas are approximate and are subject to change. Internal measurements are taken from centreline of party walls and external face of the outside wall. Prospective purchasers must rely on their own enquiries and should refer to plans, terms and conditions in the contract of sale. Loose furniture, white goods and planters represented are not included.

F = Fridge
P = Pantry
S = Sink
DW = Dishwasher
M = Microwave
L = Linen
WM = Washing Machine
ST = Study
A/C = Airconditioner
T = Tile
C = Carpet
HW = Highlight Window



WARDROBE STORAGE SYSTEM



BOX HILL

Suite 3.4, Level 3, 990 Whitehorse Road, Box Hill. Victoria 3128 | 8686 8388

HAWTHORN EAST

33 Camberwell Road, Hawthorn. Victoria 3123 | 9818 8991

MELBOURNE CBD

Level 7, 99 Queen Street, Melbourne. VIC 3000 | 9818 8991

NORTH

Suites 4 & 5 High Street, Lalor. VIC 3075 | 03 9436 0888

POINT COOK

Entrance C4, Level 1, 2 Main Street, Point Cook. VIC 3030 | 8686 8338

SOUTH MORANG

29 Gorge Road, South Morang. VIC 3752 | 8804 5888

info@areal.com.au