

Virtually inspect NOW with our
3D scan!



For Lease

42A/168 Power Street, Hawthorn VIC 3122

 2  1

\$370 per Week

For Lease

42A/168 Power Street, Hawthorn VIC 3122



Virtually inspect NOW with our 3D scan!

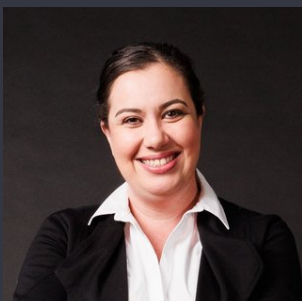
IMPORTANT COVID-19 INFO REGARDING OPEN HOMES:

Open for Inspection Schedule: Saturday, 6th of February at 11:30 - 11:40 am

Private Inspections are also available. Please call Kathy Vi at 0429 698 461 to arrange. The only prerequisite is that you have viewed the 360 3D tour available by pressing the play/3D button above.

This spacious & light-filled two-bedroom apartment is sure to excite! It comprises of two double bedrooms, large living area, and a separate kitchen with gas appliances/dishwasher, ample cupboard space and enough room for a table and chairs. Both carpeted bedrooms come with built-in wardrobes, leading out on to floorboards in the large living area and modern kitchen. Do your washing in the European laundry space and stay warm or cool with the split system. Park your car in off-street private parking, and enter through a secure entrance with intercom.

In leafy Hawthorn, this apartment is incredibly located, meters from Burwood Rd shops, cafes, and restaurants. The t...



Lauren Allan

Leasing Specialist

03 9818 8991

lauren.allan@areal.com.au





BOX HILL

Suite 3.4, Level 3, 990 Whitehorse Road, Box Hill. Victoria 3128 | 8686 8388

HAWTHORN EAST

33 Camberwell Road, Hawthorn. Victoria 3123 | 9818 8991

MELBOURNE CBD

Level 7, 99 Queen Street, Melbourne. VIC 3000 | 9818 8991

NORTH

Suites 4 & 5 High Street, Lalor. VIC 3075 | 03 9436 0888

POINT COOK

Entrance C4, Level 1, 2 Main Street, Point Cook. VIC 3030 | 8686 8338

SOUTH MORANG

29 Gorge Road, South Morang. VIC 3752 | 8804 5888

info@areal.com.au