

## Modern 2-Bedroom Apartment with Breathtaking Views – MY80 Tower, Level 38



For Lease

3807/80 A'Beckett Street, Melbourne VIC 3000

 2  1

\$700 per Week

## For Lease

3807/80 A'Beckett Street, Melbourne VIC 3000

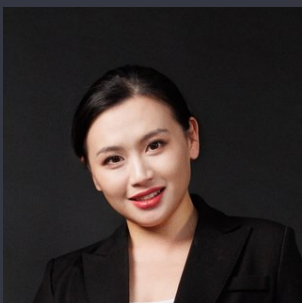


### Modern 2-Bedroom Apartment with Breathtaking Views – MY80 Tower, Level 38

\*\*Scheduling your property inspection is now a breeze! Simply click on the "Book an Inspection" or "Request a Time" button to secure your appointment. You'll instantly receive a confirmation and be kept up-to-date with any alterations or cancellations concerning your scheduled visit. Please be aware, inspections may be subject to cancellation if no bookings are registered. Make your booking today and take the first step in finding your ideal home\*\*

Perched high on level 38 of the sought-after MY80 building, this light-filled and stylish apartment delivers contemporary city living in one of Melbourne's most vibrant locations. With a smart layout, modern finishes, and expansive city views, this apartment offers the ultimate in comfort and convenience.

The open-plan living and dining area is carpeted and filled with natural light, seamlessly connecting to a private balcony with stunning views. A sleek kitchen comes complete with stone benchtops, stainless steel appliances including gas...



#### Renata Xiang

Business Development Manager

0437 626 898

03 9116 5797

renata.xiang@areal.com.au



A/REAL





## BOX HILL

Suite 3.4, Level 3, 990 Whitehorse Road, Box Hill. Victoria 3128 | 8686 8388

## HAWTHORN EAST

33 Camberwell Road, Hawthorn. Victoria 3123 | 9818 8991

## MELBOURNE CBD

Level 7, 99 Queen Street, Melbourne. VIC 3000 | 9818 8991

## NORTH

Suites 4 & 5 High Street, Lalor. VIC 3075 | 03 9436 0888

## POINT COOK

Entrance C4, Level 1, 2 Main Street, Point Cook. VIC 3030 | 8686 8338

## SOUTH MORANG

29 Gorge Road, South Morang. VIC 3752 | 8804 5888

[info@areal.com.au](mailto:info@areal.com.au)