

Virtually inspect NOW with our
3D scan!



For Lease

902A/81 Flemington Road, North Melbourne VIC 3051



\$300 per Week

For Lease

902A/81 Flemington Road, North Melbourne VIC 3051



Virtually inspect NOW with our 3D scan!

IMPORTANT COVID-19 INFO REGARDING OPEN HOMES:

Open for Inspection Schedule: Saturday, 30th of January at 3:15 - 3:30 pm

Tuesday, 2nd of February at 12:45 - 12:55 pm

Private Inspections also available. Please call Cassandra Micallef at 0451 467 649 to arrange.

This exquisite apartment complex is located on the bustling Flemington Road. With the CBD and Carlton, only a stone throw away access to these destinations is made easy with the convenience of transport right at your doorstep. Across the road from the Royal Childrens Hospital, The Royal Women's Hospital and the Royal Melbourne Hospital.

Offering two tranquil gardens for relaxation and also a rooftop entertaining area with incredible views of the city and BBQ Facilities.

The spacious 1 bedroom apartment boasts electric cooktop and dish draw, ample cupboard and bench space, modern bathroom with laundry Facilities and plenty of storage. The Lounge and Bedroom are well appointed with ...

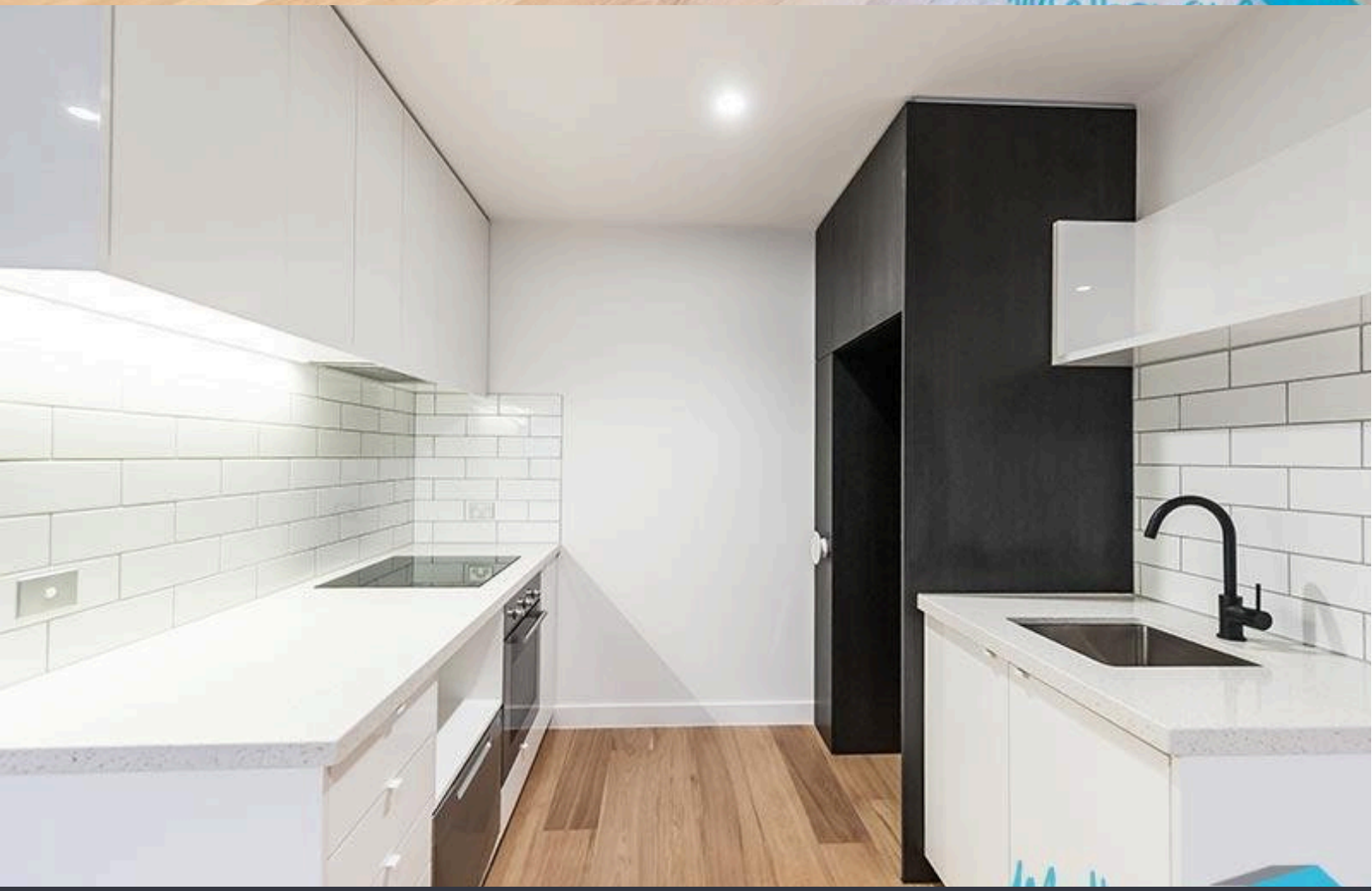
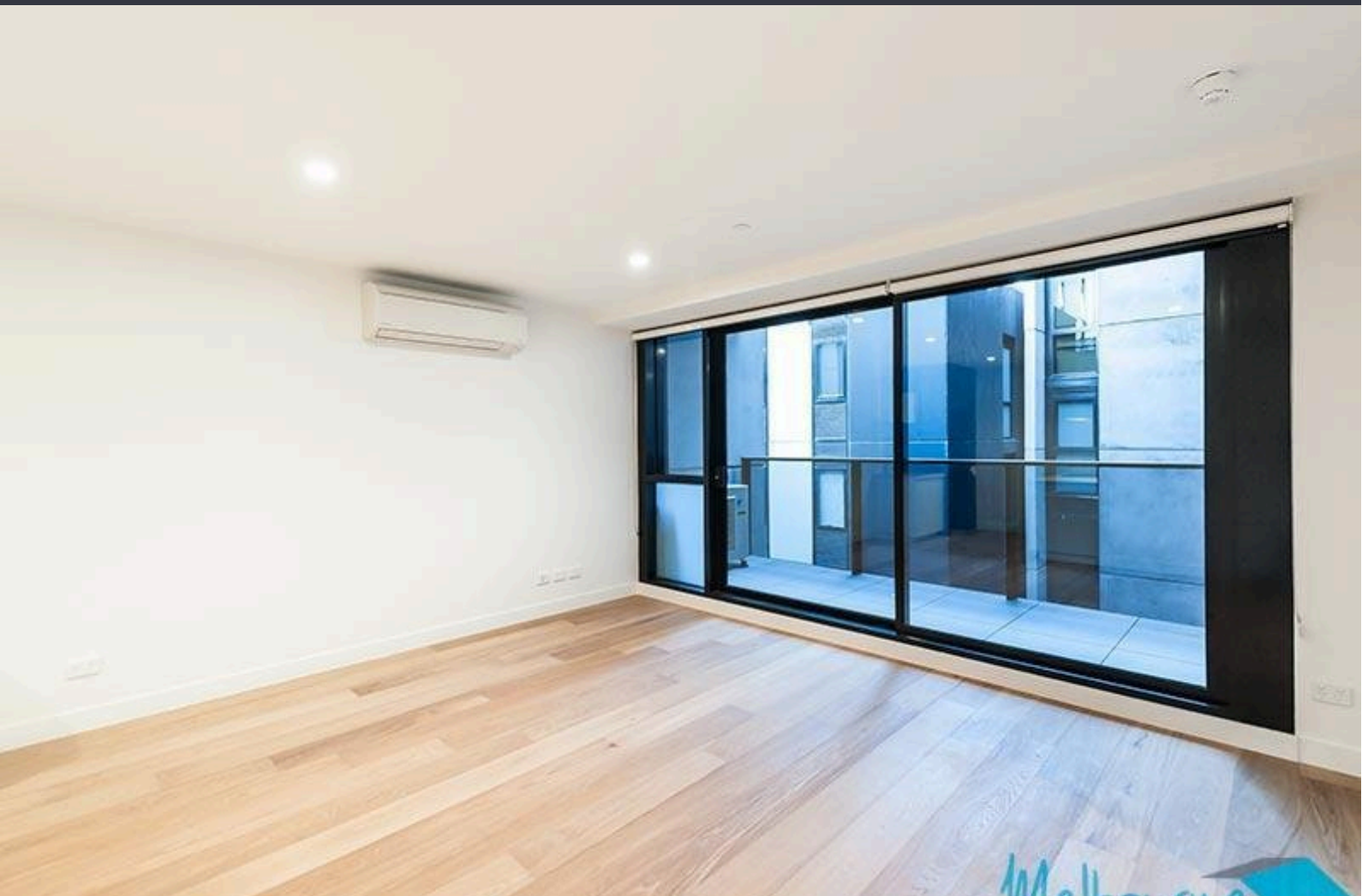


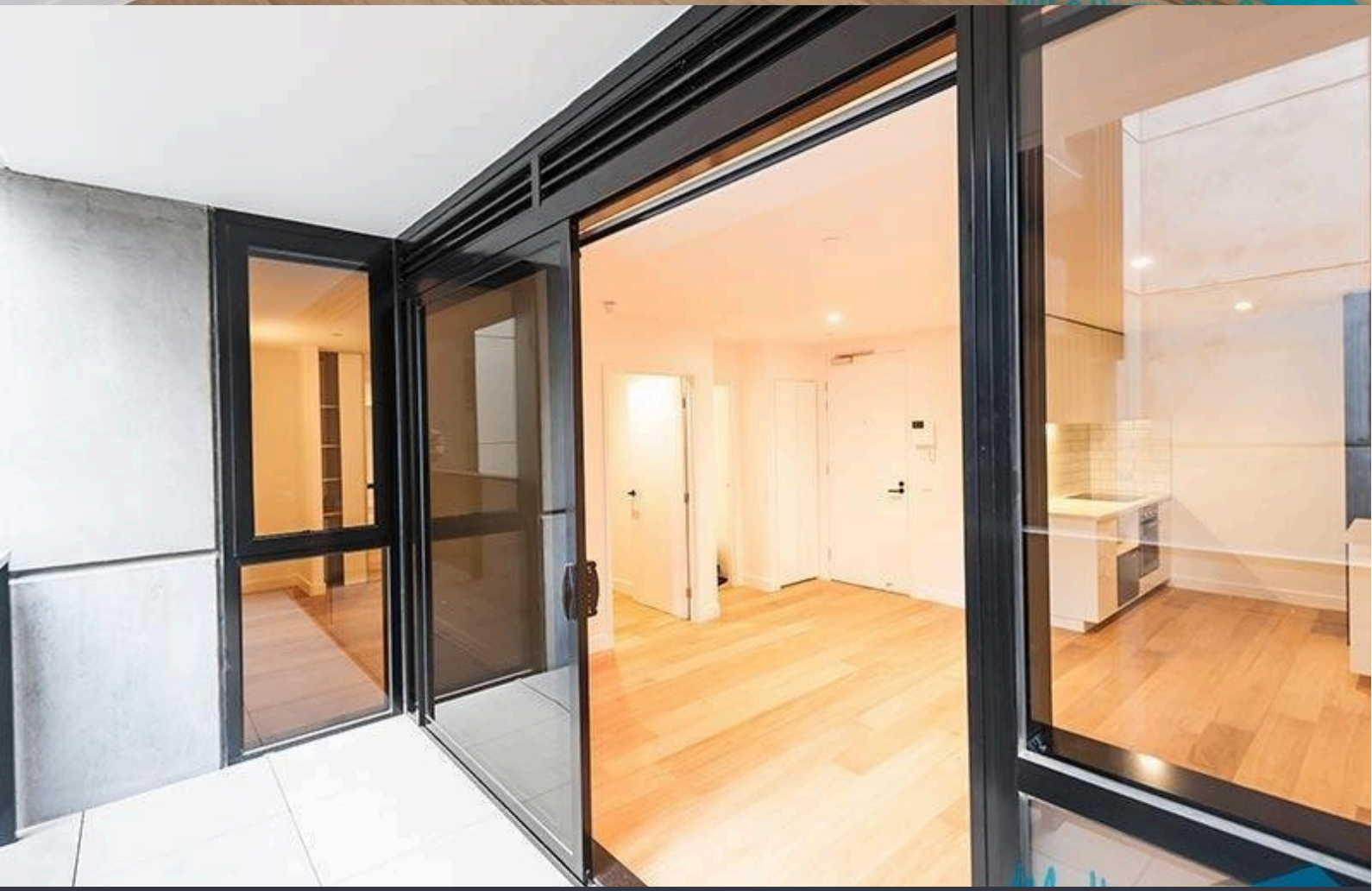
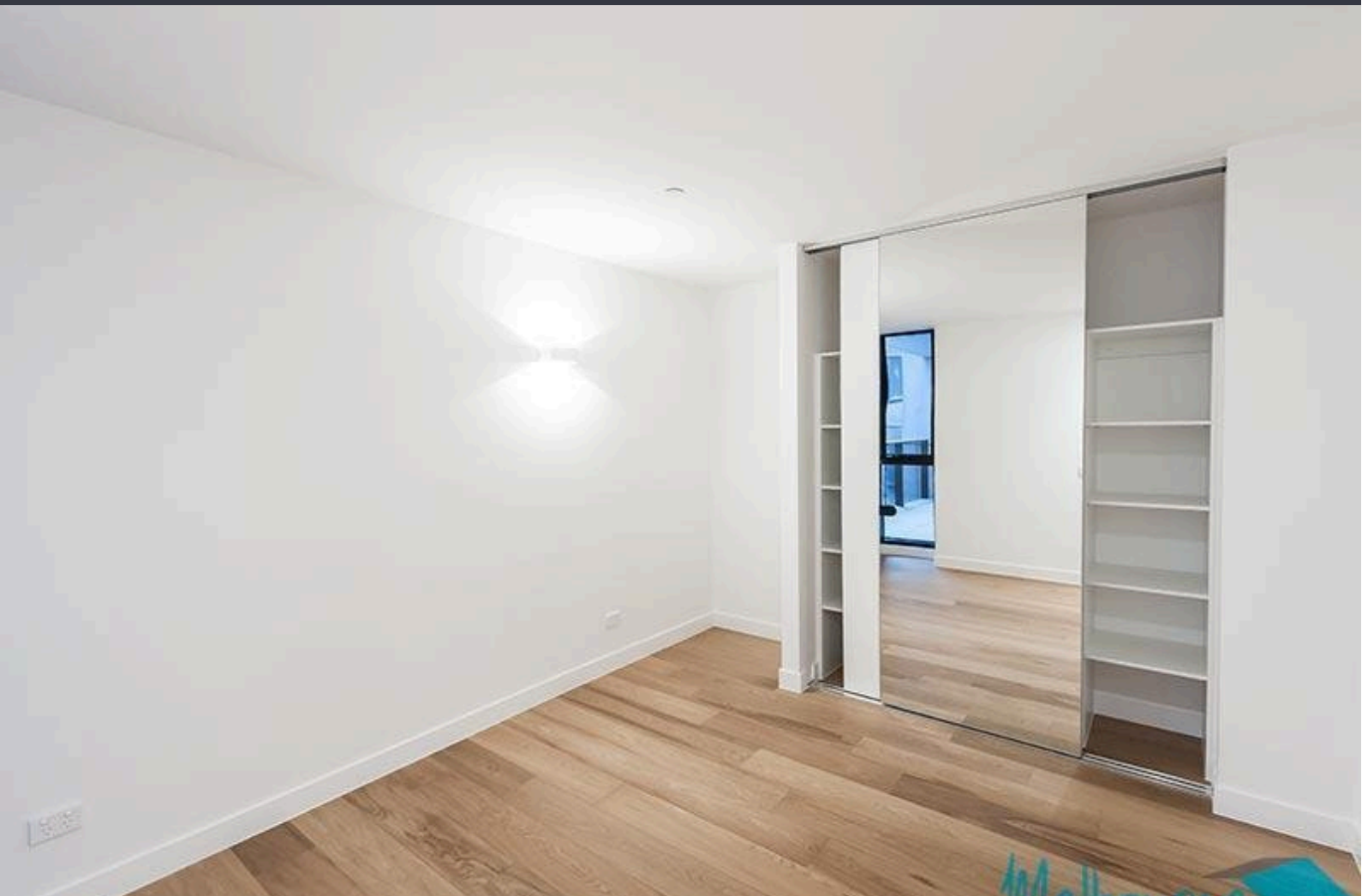
Lauren Allan

Leasing Specialist

03 9818 8991

lauren.allan@areal.com.au





BOX HILL

Suite 3.4, Level 3, 990 Whitehorse Road, Box Hill. Victoria 3128 | 8686 8388

HAWTHORN EAST

33 Camberwell Road, Hawthorn. Victoria 3123 | 9818 8991

MELBOURNE CBD

Level 7, 99 Queen Street, Melbourne. VIC 3000 | 9818 8991

NORTH

Suites 4 & 5 High Street, Lalor. VIC 3075 | 03 9436 0888

POINT COOK

Entrance C4, Level 1, 2 Main Street, Point Cook. VIC 3030 | 8686 8338

SOUTH MORANG

29 Gorge Road, South Morang. VIC 3752 | 8804 5888

info@areal.com.au