

Virtually inspect NOW with our
3D scan!



For Lease

2/7 Anne Street, Blackburn VIC 3130

 3  2

\$464 per Week

For Lease

2/7 Anne Street, Blackburn VIC 3130

 3  2

Virtually inspect NOW with our 3D scan!

IMPORTANT COVID-19 INFO REGARDING OPEN HOMES:

Inspections currently unavailable due to COVID stage 4 restrictions. Please contact us for a copy of the pre-scanned 360° virtual inspection.

Open plan spacious living/dining area ideal for entertaining and leads out to a private courtyard. Comes with a separate formal lounge with polished floorboards throughout and wooden Venetian blinds.

Master bedroom with full ensuite and walk-in robe, 2nd central bathroom, 2nd separate toilet, and separate laundry with external access

Features include:

modern gourmet kitchen

Granite benchtops

Gas Stainless steel appliances

Dishwasher

Alarm system

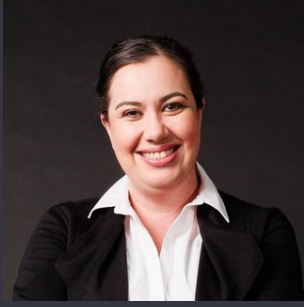
Ducted air-conditioning

Ducted heating

Sparkling polished hardwood floors throughout

Remote double garage with internal access

Instant access to the city via the Eastern Freeway and within close proximity to Blackburn High School, Old Orchid Primary School, North Blackburn Shopping Centre, and Blackburn train station.



Lauren Allan

Leasing Specialist

03 9818 8991

lauren.allan@areal.com.au

A/REAL



A/REAL



BOX HILL

Suite 3.4, Level 3, 990 Whitehorse Road, Box Hill. Victoria 3128 | 8686 8388

HAWTHORN EAST

33 Camberwell Road, Hawthorn. Victoria 3123 | 9818 8991

MELBOURNE CBD

Level 7, 99 Queen Street, Melbourne. VIC 3000 | 9818 8991

NORTH

Suites 4 & 5 High Street, Lalor. VIC 3075 | 03 9436 0888

POINT COOK

Entrance C4, Level 1, 2 Main Street, Point Cook. VIC 3030 | 8686 8338

SOUTH MORANG

29 Gorge Road, South Morang. VIC 3752 | 8804 5888

info@areal.com.au