

Spacious 4-Bedroom Corner
Home in Prime Wheelers Hill



For Lease

38 Cootamundra Drive, Wheelers Hill VIC 3150

 4  2

\$680 per Week

For Lease

38 Cootamundra Drive, Wheelers Hill VIC 3150

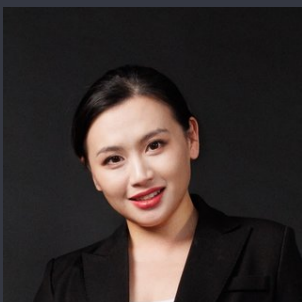
 4  2

Spacious 4-Bedroom Corner Home in Prime Wheelers Hill

Scheduling your property inspection is now a breeze! Simply click on the "Book an Inspection" or "Request a Time" button to secure your appointment. You'll instantly receive a confirmation and be kept up-to-date with any alterations or cancellations concerning your scheduled visit. Please be aware, inspections may be subject to cancellation if no bookings are registered. Make your booking today and take the first step in finding your ideal home

This well-maintained family home offers generous proportions, multiple living zones, and a flexible floorplan perfect for comfortable family living. Ideally positioned on a corner block, the property features two separate entry points, making everyday living and entertaining a breeze.

Inside, you'll find four spacious bedrooms, including a master with built-in robe and private ensuite. Bedrooms two and three also include built-in robes, while the fourth bedroom is generously sized. A separate study with built-in shelving provides the perf...



Renata Xiang

Business Development Manager

0437 626 898

03 9116 5797

renata.xiang@areal.com.au



A/REAL



A/REAL



A/REAL

BOX HILL

Suite 3.4, Level 3, 990 Whitehorse Road, Box Hill. Victoria 3128 | 8686 8388

HAWTHORN EAST

33 Camberwell Road, Hawthorn. Victoria 3123 | 9818 8991

MELBOURNE CBD

Level 7, 99 Queen Street, Melbourne. VIC 3000 | 9818 8991

NORTH

Suites 4 & 5 High Street, Lalor. VIC 3075 | 03 9436 0888

POINT COOK

Entrance C4, Level 1, 2 Main Street, Point Cook. VIC 3030 | 8686 8338

SOUTH MORANG

29 Gorge Road, South Morang. VIC 3752 | 8804 5888

info@areal.com.au