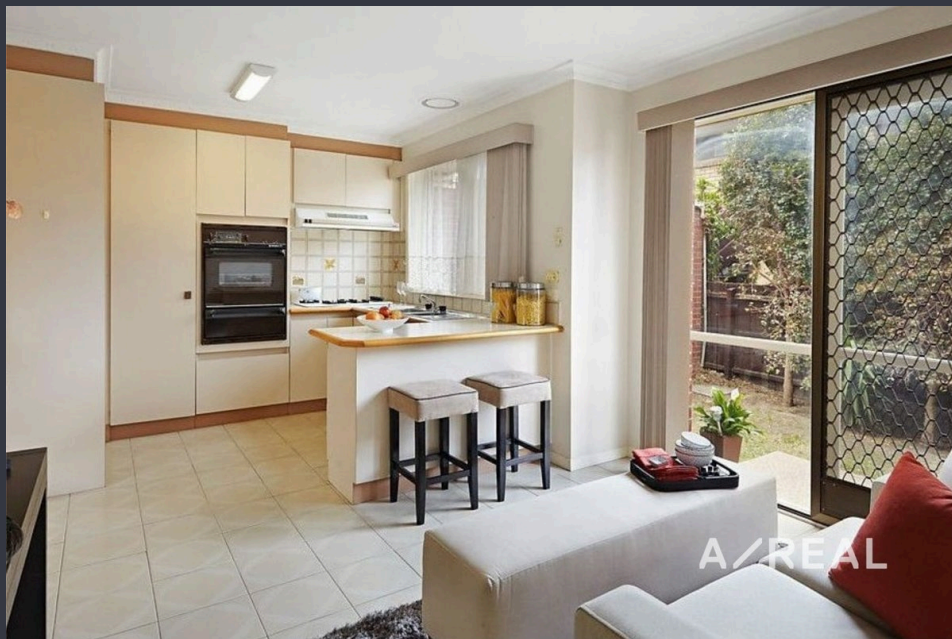


Prime Location in Glen Waverley – 3-Bedroom Unit with Double Garage



For Lease

4/143-149 Coleman Parade, Glen Waverley VIC 3150

 3  1

\$650 per Week

For Lease

4/143-149 Coleman Parade, Glen Waverley VIC 3150



Prime Location in Glen Waverley – 3-Bedroom Unit with Double Garage

Scheduling your property inspection is now a breeze! Simply click on the "Book an Inspection" or "Request a Time" button to secure your appointment. You'll instantly receive a confirmation and be kept up-to-date with any alterations or cancellations concerning your scheduled visit. Please be aware, inspections may be subject to cancellation if no bookings are registered. Make your booking today and take the first step in finding your ideal home

Perfectly positioned in the heart of Glen Waverley, this well-presented three-bedroom unit offers a blend of comfort, convenience, and low-maintenance living. The home features three spacious bedrooms with built-in robes, a central bathroom with both shower and bathtub, a bright open-plan living and dining area, and a well-equipped kitchen with ample storage. For year-round comfort, there is split system heating and cooling, while the secure double garage with internal access and a private courtyard complete the property.

This location is...



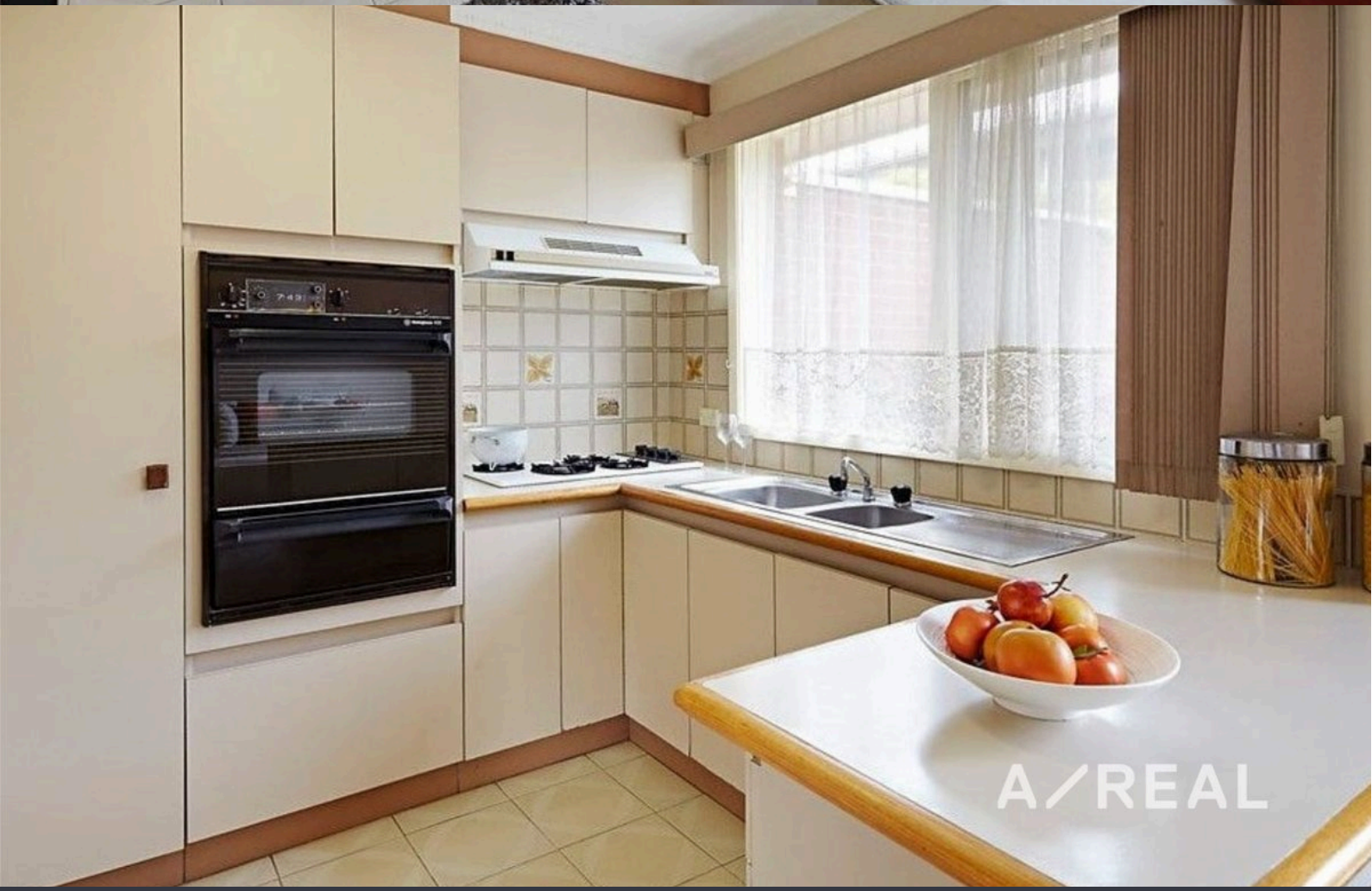
Amanda Zhou

Relationship Manager

03 9818 8991

amanda.zhou@areal.com.au

A/REAL



A/REAL



A/REAL



A/REAL

BOX HILL

Suite 3.4, Level 3, 990 Whitehorse Road, Box Hill. Victoria 3128 | 8686 8388

HAWTHORN EAST

33 Camberwell Road, Hawthorn. Victoria 3123 | 9818 8991

MELBOURNE CBD

Level 7, 99 Queen Street, Melbourne. VIC 3000 | 9818 8991

NORTH

Suites 4 & 5 High Street, Lalor. VIC 3075 | 03 9436 0888

POINT COOK

Entrance C4, Level 1, 2 Main Street, Point Cook. VIC 3030 | 8686 8338

SOUTH MORANG

29 Gorge Road, South Morang. VIC 3752 | 8804 5888

info@areal.com.au