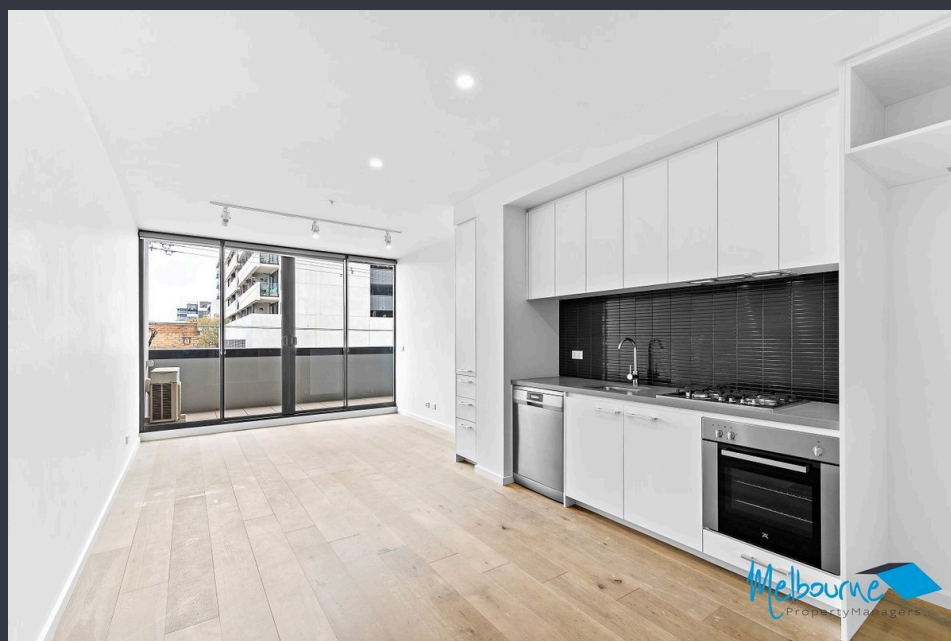


Virtually inspect NOW with our  
3D scan!



## For Lease

111/360 Lygon Street, Brunswick East VIC 3057



\$320 per Week

## For Lease

111/360 Lygon Street, Brunswick East VIC 3057



Virtually inspect NOW with our 3D scan!

IMPORTANT COVID-19 INFO REGARDING OPEN HOMES:

Open for Inspection Schedule: Saturday, 6th of February at 10:25 - 10:35 am

Residents will enjoy a stunning entrance foyer, basement car park and storage cage. Featuring premium fixtures and fittings throughout, your new home boasts an as new kitchen with ample cupboard space, stone bench tops, large open plan living area, bedroom with built in robes, modern bathroom and the large balcony great for entertaining.

With trams at your doorstep and trains stations only a short walk away, being less than 5kms away from the Melbourne CBD makes this location one of Melbourne's most ideal suburbs to live in.

Property Code: 4890



**Lauren Allan**

Leasing Specialist

03 9818 8991

[lauren.allan@areal.com.au](mailto:lauren.allan@areal.com.au)





## BOX HILL

Suite 3.4, Level 3, 990 Whitehorse Road, Box Hill. Victoria 3128 | 8686 8388

## HAWTHORN EAST

33 Camberwell Road, Hawthorn. Victoria 3123 | 9818 8991

## MELBOURNE CBD

Level 7, 99 Queen Street, Melbourne. VIC 3000 | 9818 8991

## NORTH

Suites 4 & 5 High Street, Lalor. VIC 3075 | 03 9436 0888

## POINT COOK

Entrance C4, Level 1, 2 Main Street, Point Cook. VIC 3030 | 8686 8338

## SOUTH MORANG

29 Gorge Road, South Morang. VIC 3752 | 8804 5888

[info@areal.com.au](mailto:info@areal.com.au)