

Move in, renovate or invest in
the heart of Croydon



For Sale

10/8-12 Landale Avenue, Croydon VIC 3136

 3  2

\$520,000

For Sale

10/8-12 Landale Avenue, Croydon VIC 3136

 3  2

Move in, renovate or invest in the heart of Croydon

YOU MUST REGISTER FOR THIS INSPECTION! IF YOU DO NOT REGISTER, WE ARE NOT ALLOWED TO TAKE YOU THROUGH THE PROPERTY. THANK YOU FOR YOUR COOPERATION.

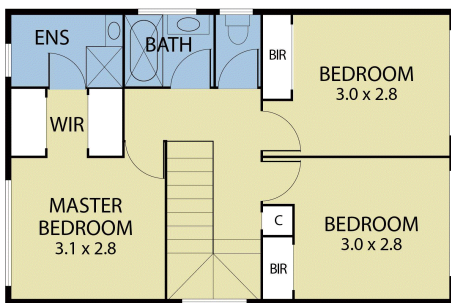
Eager renovators, first-time buyers and astute investors with an eye for potential need look no further than this easy-care home. The property is set just moments from everything Croydon has to offer including the train station, picturesque parks, local shops, schools and Swinburne University of Technology.

Step inside where your easy-care, light-filled and two-storey layout awaits. The ground floor is dedicated to the living areas and includes a heated and generous lounge room with a wall of windows and gorgeous timber floors. Family dinners are best enjoyed in the open-plan kitchen and dining area with plenty of bench space, breakfast bar seating, a freestanding gas cooktop and the potential to update and create the gourmet chef's haven you've always wanted.

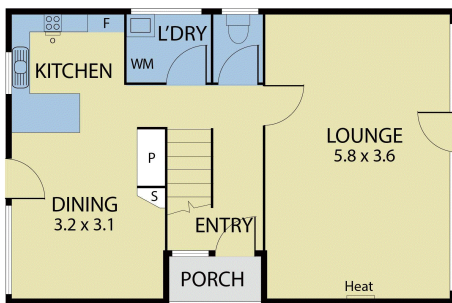
A laundry and a toilet complete this level of the home. All three bedrooms ar...







FIRST FLOOR



GROUND FLOOR



BOX HILL

Suite 3.4, Level 3, 990 Whitehorse Road, Box Hill. Victoria 3128 | 8686 8388

HAWTHORN EAST

33 Camberwell Road, Hawthorn. Victoria 3123 | 9818 8991

MELBOURNE CBD

Level 7, 99 Queen Street, Melbourne. VIC 3000 | 9818 8991

NORTH

Suites 4 & 5 High Street, Lalor. VIC 3075 | 03 9436 0888

POINT COOK

Entrance C4, Level 1, 2 Main Street, Point Cook. VIC 3030 | 8686 8338

SOUTH MORANG

29 Gorge Road, South Morang. VIC 3752 | 8804 5888

info@areal.com.au