

## Stunning Corner Apartment with Breathtaking Views in the Heart of QV Precinct



### For Lease

2908/22 Jane Bell Lane, Melbourne VIC 3000

 2  1

\$760 per Week

## For Lease

2908/22 Jane Bell Lane, Melbourne VIC 3000



### Stunning Corner Apartment with Breathtaking Views in the Heart of QV Precinct

\*\*Scheduling your property inspection is now a breeze! Simply click on the "Book an Inspection" or "Request a Time" button to secure your appointment. You'll instantly receive a confirmation and be kept up-to-date with any alterations or cancellations concerning your scheduled visit. Please be aware, inspections may be subject to cancellation if no bookings are registered. Make your booking today and take the first step in finding your ideal home\*\*

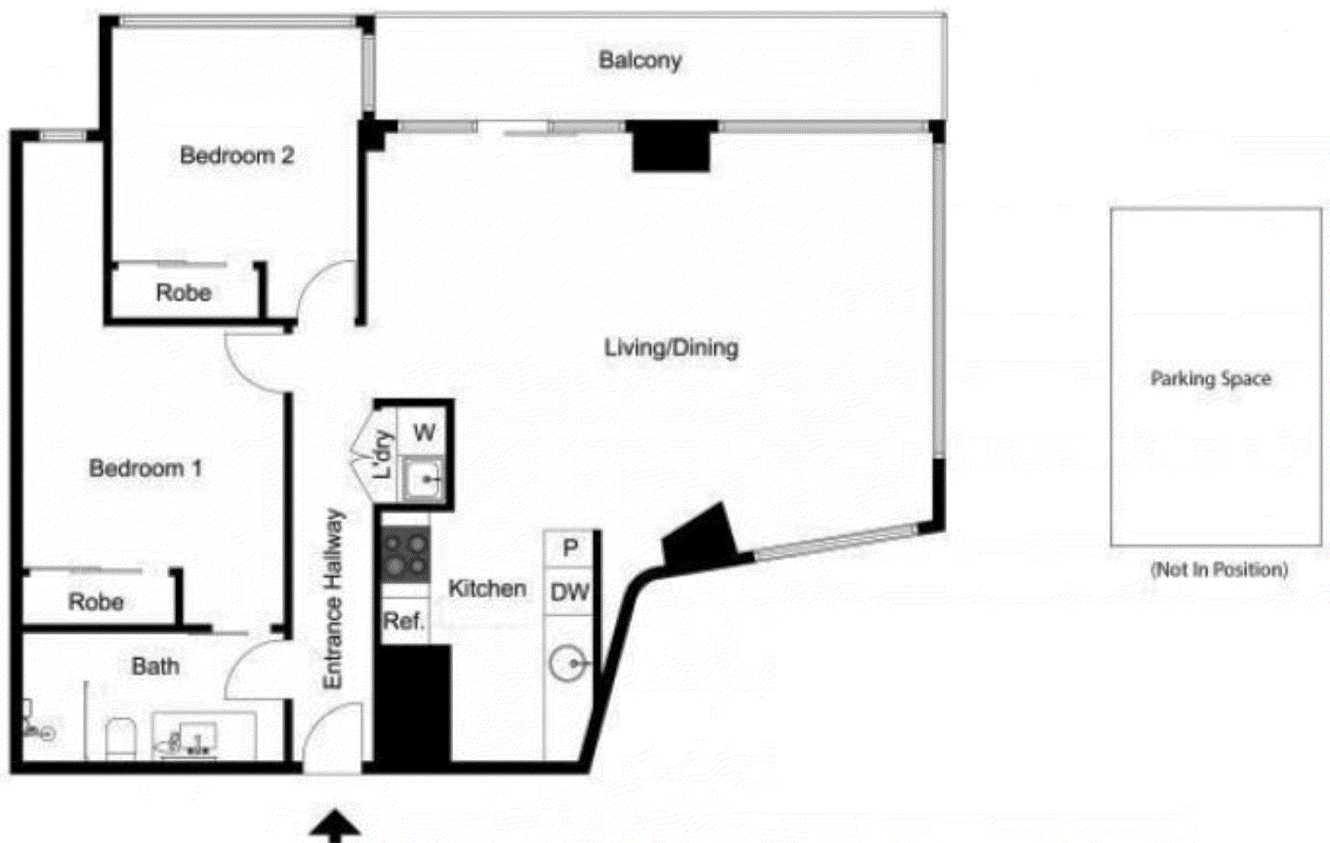
Perched high on the 29th floor, this spacious and light-filled corner apartment offers the perfect combination of modern living and unbeatable convenience in one of Melbourne's most dynamic lifestyle hubs.

Thoughtfully designed, the apartment features two generously sized, carpeted bedrooms—both with windows offering natural light and city outlooks. The main bedroom enjoys direct access to the central bathroom, enhancing privacy and functionality, while the second bedroom is bathed in natural light, making it an ideal space for a guest ro...



A/REAL





## BOX HILL

Suite 3.4, Level 3, 990 Whitehorse Road, Box Hill. Victoria 3128 | 8686 8388

## HAWTHORN EAST

33 Camberwell Road, Hawthorn. Victoria 3123 | 9818 8991

## MELBOURNE CBD

Level 7, 99 Queen Street, Melbourne. VIC 3000 | 9818 8991

## NORTH

Suites 4 & 5 High Street, Lalor. VIC 3075 | 03 9436 0888

## POINT COOK

Entrance C4, Level 1, 2 Main Street, Point Cook. VIC 3030 | 8686 8338

## SOUTH MORANG

29 Gorge Road, South Morang. VIC 3752 | 8804 5888

[info@areal.com.au](mailto:info@areal.com.au)