

Modern and stylish family living  
in a central locale



For Sale

465 Springfield Road, Mitcham VIC 3132

 3  2  302sqm

\$955,000

## For Sale

465 Springfield Road, Mitcham VIC 3132



3



2



302sqm

### Modern and stylish family living in a central locale

Everything Mitcham has to offer is only moments from this idyllic two-storey family home set directly opposite Mullauna College. All the modern conveniences you could ever wish for are all yours to enjoy from the quality fixtures and finishes throughout to the spacious and open-plan living zones, the lush leafy outlook and the private backyard with room for the kids to run free.

Gleaming timber floors flow underfoot from the moment you step inside and draw you into the light-filled sitting area towards the open kitchen, meals and living zone. Stainless steel appliances, stone benchtops and a centre island will appeal to the avid foodie in the kitchen while the combined dining area is perfect for hosting guests.

From here, you can make your way outside to the covered pergola and unwind in the shade as the kids play outside.

The three bedrooms are set on the first floor including the master with a walk-in robe, an ensuite and an oversized window that frames the lovely outlook. A cent...

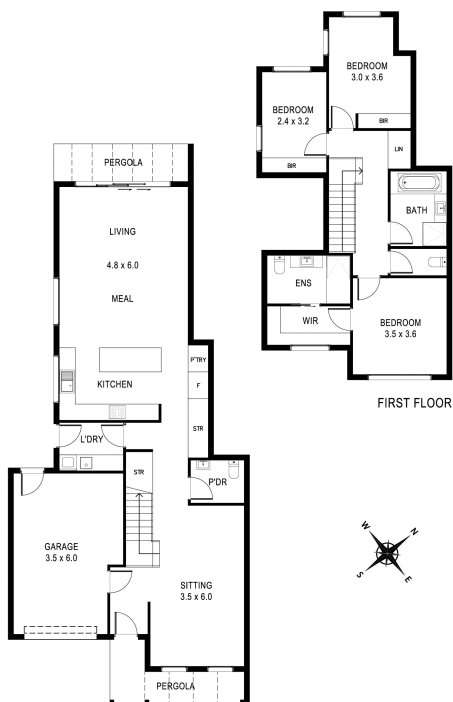
A/REAL







## 465 Springfield Rd, Mitcham



## BOX HILL

Suite 3.4, Level 3, 990 Whitehorse Road, Box Hill. Victoria 3128 | 8686 8388

## HAWTHORN EAST

33 Camberwell Road, Hawthorn. Victoria 3123 | 9818 8991

## MELBOURNE CBD

Level 7, 99 Queen Street, Melbourne. VIC 3000 | 9818 8991

## NORTH

Suites 4 & 5 High Street, Lalor. VIC 3075 | 03 9436 0888

## POINT COOK

Entrance C4, Level 1, 2 Main Street, Point Cook. VIC 3030 | 8686 8338

## SOUTH MORANG

29 Gorge Road, South Morang. VIC 3752 | 8804 5888

[info@areal.com.au](mailto:info@areal.com.au)