

## Beautiful 1 Bed - Right on the River!



## For Lease

B710/10 Trenerry Crescent, Abbotsford VIC 3067



\$435 per Week

## For Lease

B710/10 Trenerry Crescent, Abbotsford VIC 3067



### Beautiful 1 Bed - Right on the River!

To apply for this property, please enter your details to register for an inspection (if you do not register you will not receive updates regarding any changes and/or cancellations). Please note: we are unable to accept tenancy applications until the property has been inspected. Simply click on EMAIL AGENT, enter your details and receive instant details of the inspection times. We look forward to meeting you at the inspection!

Located right on Melbourne's iconic Yarra River luxury apartments have everything you have been searching for!

Featuring stylish hardwood timber flooring, spacious lounge with plenty of natural light, fully equipped modern kitchen with stainless steel appliances, large sparkling bathroom with laundry facility, bedroom with built-in robes, heating/cooling, and great sized balcony!

Building facilities include a security entrance, communal courtyard, and secure car space with a bike rack.

Ideally located, surrounded by rural beauty yet with the inner city also a...

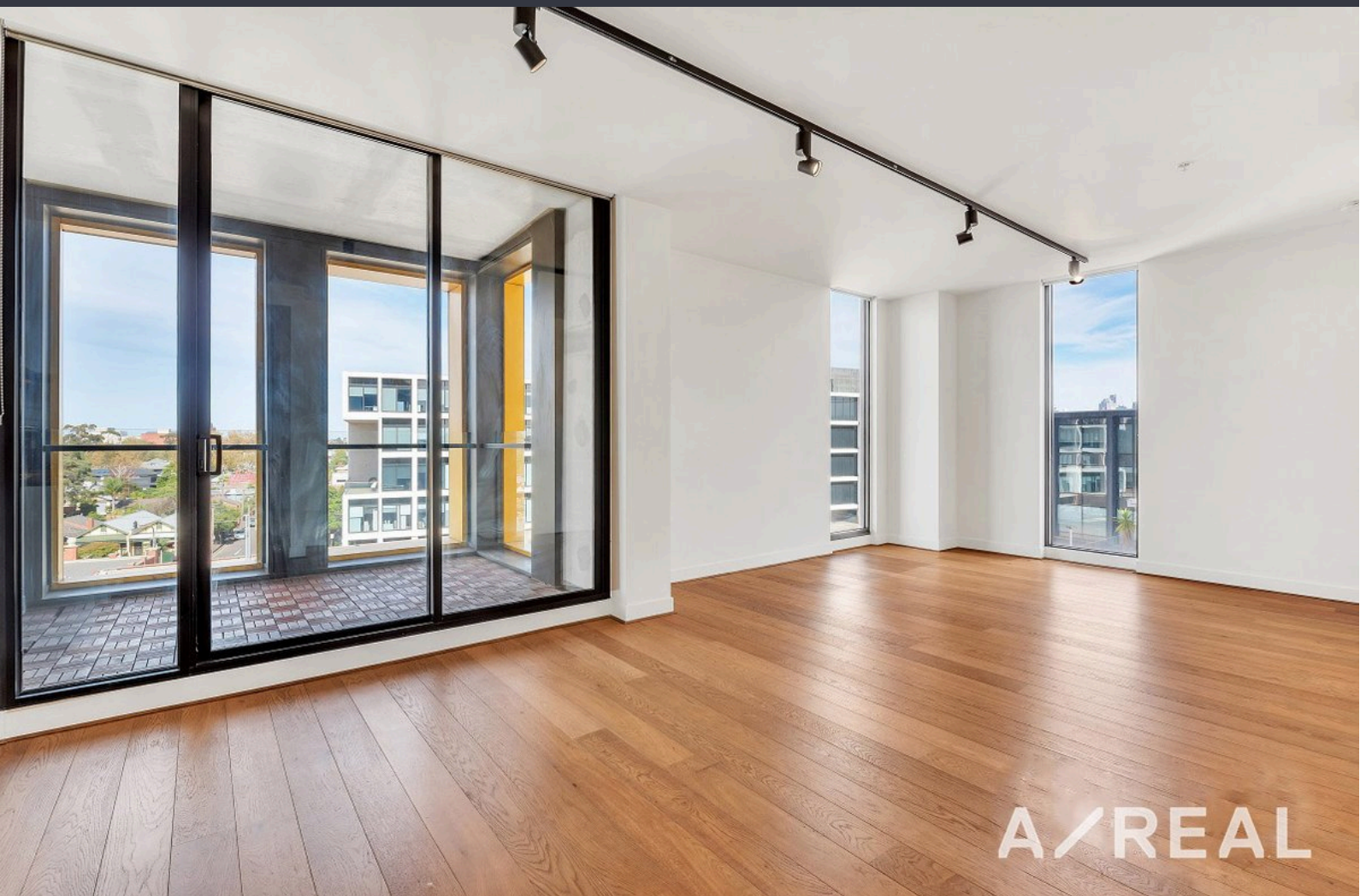


**Joshua Hellyer**

Relationship Manager

03 9818 8991

[joshua.hellyer@areal.com.au](mailto:joshua.hellyer@areal.com.au)



A/REAL





## BOX HILL

Suite 3.4, Level 3, 990 Whitehorse Road, Box Hill. Victoria 3128 | 8686 8388

## HAWTHORN EAST

33 Camberwell Road, Hawthorn. Victoria 3123 | 9818 8991

## MELBOURNE CBD

Level 7, 99 Queen Street, Melbourne. VIC 3000 | 9818 8991

## NORTH

Suites 4 & 5 High Street, Lalor. VIC 3075 | 03 9436 0888

## POINT COOK

Entrance C4, Level 1, 2 Main Street, Point Cook. VIC 3030 | 8686 8338

## SOUTH MORANG

29 Gorge Road, South Morang. VIC 3752 | 8804 5888

[info@areal.com.au](mailto:info@areal.com.au)