

Modern Apartment Living – Premier Malvern Location!



For Lease

6/246 Wattletree Rd Malvern VIC 3144



\$550 per Week

For Lease

6/246 Wattletree Rd Malvern VIC 3144



Modern Apartment Living – Premier Malvern Location!

Scheduling your property inspection is now a breeze! Simply click on the "Book an Inspection" or "Request a Time" button to secure your appointment. You'll instantly receive a confirmation and be kept up-to-date with any alterations or cancellations concerning your scheduled visit. Please be aware, inspections may be subject to cancellation if no bookings are registered. Make your booking today and take the first step in finding your ideal home

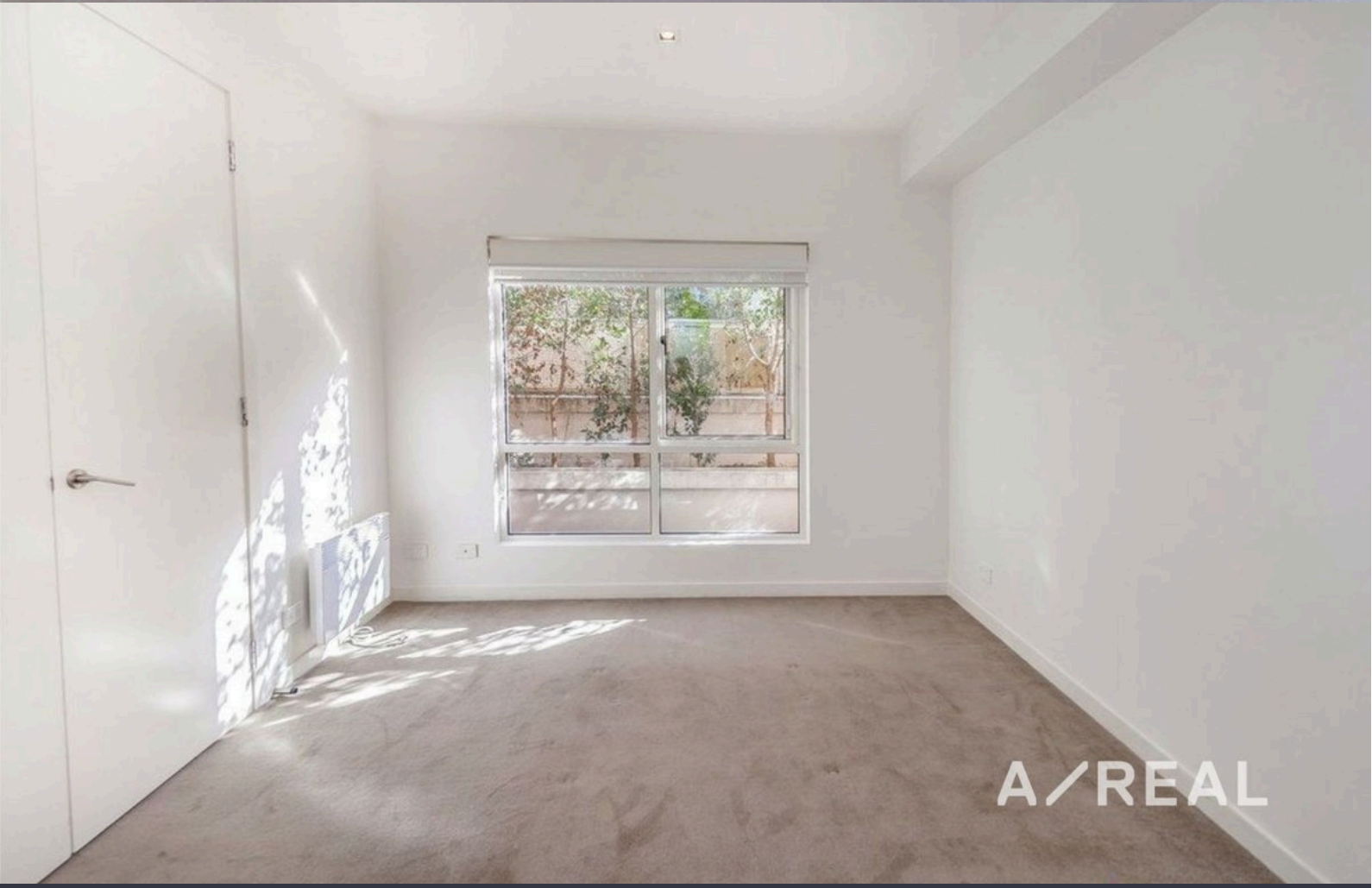
Experience the perfect blend of comfort and convenience in this stylish one-bedroom apartment situated in the heart of Malvern. Located on the top floor of a boutique complex, this residence offers a peaceful retreat with all the modern amenities you desire.

This stylish and contemporary one-bedroom apartment at 6/246 Wattletree Road, Malvern VIC 3144 offers convenient, low-maintenance living in an unbeatable location. Featuring a bright, open-plan living and dining space complemented by a sleek, modern kitchen equipped with quality appli...

A/REAL



A/REAL



BOX HILL

Suite 3.4, Level 3, 990 Whitehorse Road, Box Hill. Victoria 3128 | 8686 8388

HAWTHORN EAST

33 Camberwell Road, Hawthorn. Victoria 3123 | 9818 8991

MELBOURNE CBD

Level 7, 99 Queen Street, Melbourne. VIC 3000 | 9818 8991

NORTH

Suites 4 & 5 High Street, Lalor. VIC 3075 | 03 9436 0888

POINT COOK

Entrance C4, Level 1, 2 Main Street, Point Cook. VIC 3030 | 8686 8338

SOUTH MORANG

29 Gorge Road, South Morang. VIC 3752 | 8804 5888

info@areal.com.au