

Virtually inspect NOW with our  
3D scan and APPLY NOW!



## For Lease

203/30-34 Bray Street, South Yarra VIC 3141

 1  1

\$270 per Week

## For Lease

203/30-34 Bray Street, South Yarra VIC 3141



Virtually inspect NOW with our 3D scan and APPLY NOW!

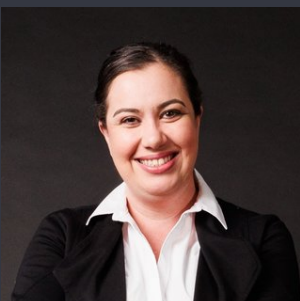
### IMPORTANT COVID-19 INFO REGARDING OPEN HOMES:

Open for Inspection Schedule: Saturday, 27th of February at 12:30 - 12:40 pm

Private Inspections also available. Please call Tahlia Sexton at 0416 740 973 to arrange.

This light-filled 2nd-floor apartment is a situation in a prime South Yarra location only 78 meters from Chapel Street shops, 270 meters from the renown Jam Factory and only minutes walk to South Yarra train station.

This studio apartment has the lot including a Queen Bed that folds away for the extra entertaining area! Galley style kitchen with quality stainless steel appliances including dish draw, gas cooktop and multi-functional oven, ample storage, pantry and stone bench tops as well as a European laundry. This apartment has loads of cupboard space with built in robes as well as floor to ceiling glass doors leading to your own private balcony. There is a separate bathroom with a large shower and wall hung vanity unit. With eastern facing windows, the apartment is per...



**Lauren Allan**

Leasing Specialist

03 9818 8991

lauren.allan@areal.com.au





## BOX HILL

Suite 3.4, Level 3, 990 Whitehorse Road, Box Hill. Victoria 3128 | 8686 8388

## HAWTHORN EAST

33 Camberwell Road, Hawthorn. Victoria 3123 | 9818 8991

## MELBOURNE CBD

Level 7, 99 Queen Street, Melbourne. VIC 3000 | 9818 8991

## NORTH

Suites 4 & 5 High Street, Lalor. VIC 3075 | 03 9436 0888

## POINT COOK

Entrance C4, Level 1, 2 Main Street, Point Cook. VIC 3030 | 8686 8338

## SOUTH MORANG

29 Gorge Road, South Morang. VIC 3752 | 8804 5888

[info@areal.com.au](mailto:info@areal.com.au)